

LABOUR FORCE AUSTRALIA

PRELIMINARY

EMBARGO: 11:30AM (CANBERRA TIME) THURS 12 MAR 1998

FEBRUARY KEY FIGURES

TREND ESTIMATES

	Jan 98	Feb 98	monthly change
Employed persons ('000)	8 522.0	8 534.6	0.1 %
Unemployed persons ('000)	757.6	752.1	-0.7 %
Unemployment rate (%)	8.2	8.1	-0.1 pts
Participation rate (%)	63.2	63.2	0.0 pts

SEASONALLY ADJUSTED

	Jan 98	Feb 98	monthly change
Employed persons ('000)	8 514.6	8 529.4	14.8
Unemployed persons ('000)	754.8	751.0	-3.9
Unemployment rate (%)	8.1	8.1	-0.1 pts
Participation rate (%)	63.1	63.2	0.0 pts

FEBRUARY KEY POINTS

TREND ESTIMATES

EMPLOYMENT

- has continued rising, to 8,534,600 in February 1998.

UNEMPLOYMENT

- has been falling steadily since April 1997, and was 752,100 in February 1998.

UNEMPLOYMENT RATE

- fell to 8.1% in February 1998, the lowest trend rate since December 1990.

PARTICIPATION RATE

- was 63.2% for the sixth consecutive month.

SEASONALLY ADJUSTED ESTIMATES

EMPLOYMENT

- rose by 14,800 in February 1998 to 8,529,400 with a rise in part-time employment of 21,700 and a fall in full-time employment of 7,000.

UNEMPLOYMENT

- fell by 3,900 to 751,000. The number of unemployed males rose by 10,500 while the number of unemployed females fell by 14,400.

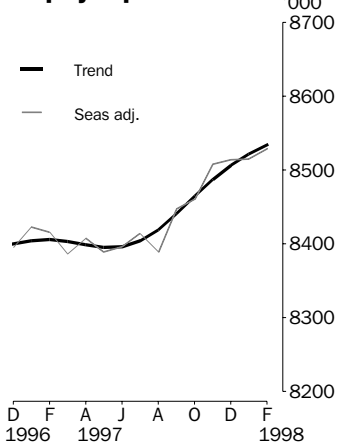
UNEMPLOYMENT RATE

- fell by more than 0.05 percentage points, but remained at 8.1% in rounded terms. The male rate rose by 0.2 points and the female rate fell by 0.4 points.
- NSW 7.7% (7.4% last month); Vic. 8.0% (8.6%); Qld 8.9% (8.8%); SA 9.9% (10.0%); WA 7.0% (7.1%); Tas. 10.3% (10.8%).

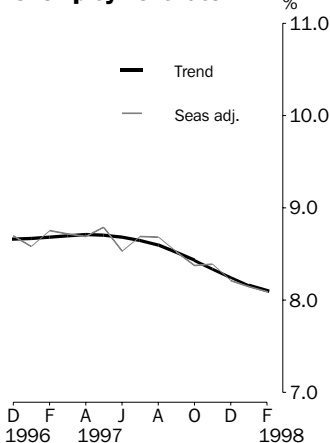
PARTICIPATION RATE

- remained relatively steady at 63.2%.

Employed persons



Unemployment rate



- For further information about these and related statistics, contact Donna Maurer on 02 6252 6525 or any ABS office.

NOTES

FORTHCOMING ISSUES

ISSUE	RELEASE DATE
March 1998	9 April 1998
April 1998	7 May 1998
May 1998	11 June 1998
June 1998	9 July 1998
July 1998	6 August 1998
August 1998	10 September 1998



CHANGES THIS MONTH

New Seasonal Factors Seasonally adjusted and trend data have been revised following the annual updating of seasonal factors. See paragraphs 13 to 16 of the Explanatory Notes for further information.

Sample Redesign Following each Census of Population and Housing, the ABS selects a new sample for the Labour Force Survey. This is done to ensure that the sample continues to accurately represent the distribution of the Australian population. A new sample has recently been selected based on the 1996 Census. The bulk of the new sample is being phased in over the period September 1997 to April 1998, with one eighth of this portion of the sample being introduced each month. The remainder of the sample (about 15% of the total), which covers less settled areas of Australia and non-private dwellings, was rotated in fully in September 1997 for New South Wales, Victoria, Tasmania, Northern Territory and Australian Capital Territory and in October 1997 for Queensland, South Australia and Western Australia.

Detailed information about the new sample is provided in *Information Paper: Labour Force Survey Sample Design* (cat. no. 6269.0), which was released on 2 September 1997.



ROUNDING

Estimates of monthly change shown on page 1 have been calculated using unrounded estimates, and may be different from, but are more accurate than, movements obtained from the rounded estimates. The graphs on page 1 also depict movements calculated from unrounded estimates.



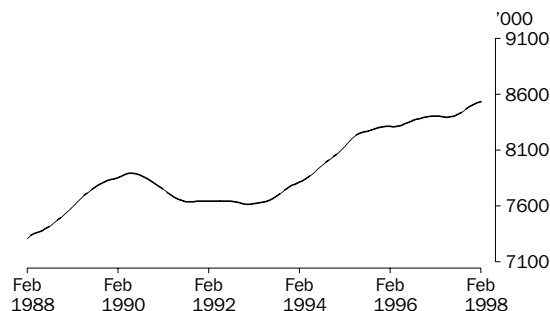
W. McLennan
Australian Statistician



PRINCIPAL LABOUR FORCE SERIES: Trend estimates

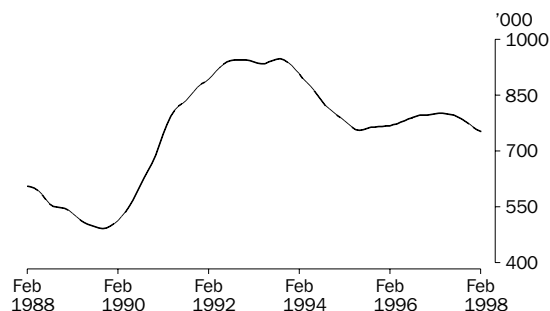
EMPLOYED PERSONS

The trend estimate of employed persons rose strongly, from a low of 7,616,000 in January 1993, until early 1996. The trend then continued to rise but at a slower rate, with small periods of decline in early 1996 and early 1997. In recent months the trend estimate has risen strongly, to 8,534,600 in February 1998.



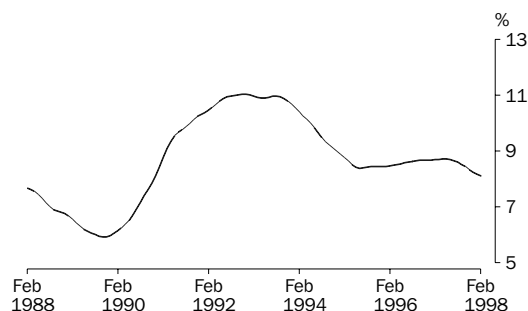
UNEMPLOYED PERSONS

The trend estimate of unemployment peaked at 947,800 in September 1993, before falling rapidly to 755,200 in June 1995. The trend then rose slowly for almost two years, reaching 801,400 in April 1997. Since then, the trend has been falling steadily, and was 752,100 in February 1998.



UNEMPLOYMENT RATE

From a high of 11.0% in late 1992 and again in mid 1993, the trend unemployment rate fell steadily to 8.4% in May 1995. The trend then rose slowly and was steady at 8.7% between September 1996 and June 1997. More recently the trend has been falling and was 8.1% in February 1998.

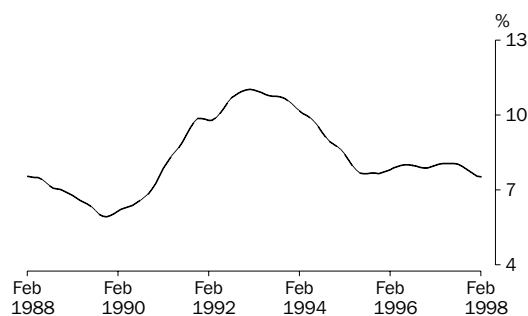


STATES: Trend estimates

UNEMPLOYMENT RATE

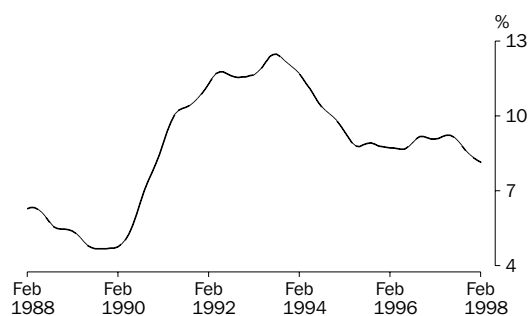
NEW SOUTH WALES

From a peak of 11.0% in late 1992 and early 1993, the trend unemployment rate for New South Wales fell rapidly to 7.7% in late 1995. After rising gradually to reach 8.1% in mid 1997, the trend rate has dropped, to 7.5% in February 1998.



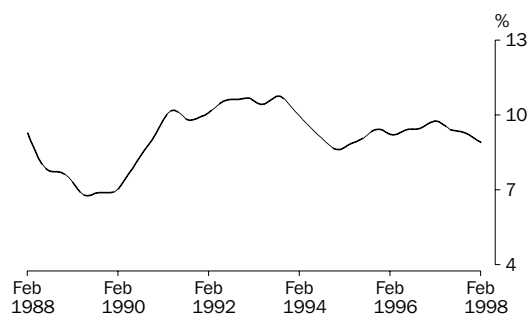
VICTORIA

The trend unemployment rate for Victoria fell rapidly from a high of 12.5% in mid 1993, to 8.8% in May 1995. After remaining relatively steady for a year, the trend rate rose slightly, reaching 9.2% between April and June 1997. Since then, the trend rate has dropped, to 8.1% in February 1998.



QUEENSLAND

The trend unemployment rate for Queensland peaked at 10.7% in late 1992 and again in mid 1993. The trend rate then fell rapidly to 8.6% in December 1994, before rising to 9.8% in February 1997. The trend rate has since fallen steadily, and in February 1998 was 8.9%.

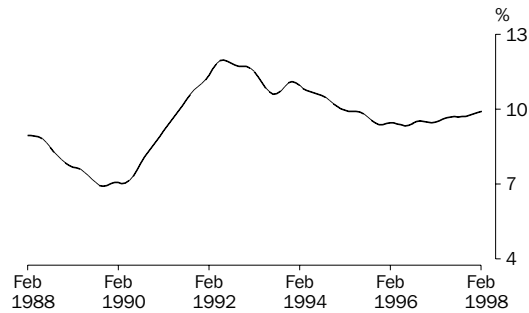


STATES: Trend estimates

UNEMPLOYMENT RATE

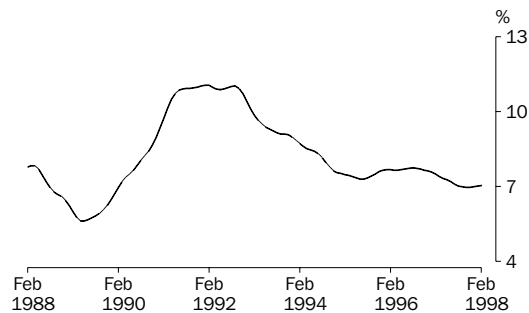
SOUTH AUSTRALIA

In South Australia, the trend unemployment rate peaked earlier than in other States, reaching 12.0% in June 1992. The trend rate fell steadily for 14 months, before again rising, to 11.1% in late 1993. It then fell steadily to 9.3% in June 1996. The trend rate has since risen slowly, and was 9.9% in February 1998.



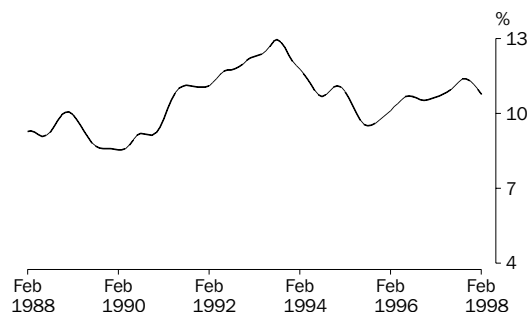
WESTERN AUSTRALIA

The trend unemployment rate for Western Australia has been consistently lower than other States since late 1992. From 11.0% in August 1992 the rate fell rapidly to 7.3% in mid 1995. It rose slightly to 7.7% from January to November 1996 before falling. In February 1998 the trend rate was steady at 7.0%, for the seventh consecutive month.



TASMANIA

From a high of 13.0% in August 1993, the trend unemployment rate for Tasmania fell to a low of 9.5% in August 1995. The trend rate then rose, and by September 1997 had reached 11.4%. In recent months the trend unemployment rate has fallen and was 10.8% in February 1998.



LABOUR FORCE STATUS (AGED 15 AND OVER): Original

Month	EMPLOYED.....			UNEMPLOYED.....			Labour force	Not in labour force	Civilian population aged 15 and over	Unemployment rate	Participation rate
	Full time	Part time	Total	Looking for f/t work	Looking for p/t work	Total					
	'000	'000	'000	'000	'000	'000	'000	'000	'000	%	%
MALES											
1996											
December	4 277.6	545.2	4 822.8	397.1	65.0	462.1	5 284.9	1 832.0	7 116.9	8.7	74.3
1997											
January	4 221.2	531.2	4 752.4	435.0	65.3	500.3	5 252.6	1 871.5	7 124.2	9.5	73.7
February	4 210.6	527.3	4 737.9	451.7	61.9	513.6	5 251.4	1 880.0	7 131.4	9.8	73.6
March	4 186.6	568.9	4 755.6	418.4	69.5	487.9	5 243.5	1 895.2	7 138.7	9.3	73.5
April	4 189.4	578.1	4 767.5	396.9	63.3	460.2	5 227.7	1 919.5	7 147.1	8.8	73.1
May	4 183.6	577.1	4 760.7	402.9	55.2	458.1	5 218.8	1 936.8	7 155.6	8.8	72.9
June	4 191.0	591.4	4 782.4	384.4	52.0	436.4	5 218.8	1 945.3	7 164.1	8.4	72.8
July	4 231.3	562.9	4 794.2	397.5	50.1	447.6	5 241.8	1 930.9	7 172.8	8.5	73.1
August	4 153.3	575.9	4 729.2	398.5	49.4	447.8	5 177.0	2 004.4	7 181.4	8.7	72.1
September	4 235.5	581.0	4 816.6	399.5	70.0	469.5	5 286.1	1 904.0	7 190.1	8.9	73.5
October	4 234.5	577.3	4 811.8	370.2	56.5	426.7	5 238.5	1 961.2	7 199.7	8.1	72.8
November	4 238.8	582.6	4 821.4	378.3	59.0	437.2	5 258.7	1 950.6	7 209.3	8.3	72.9
December	4 309.7	586.8	4 896.5	380.0	66.5	446.5	5 343.0	1 875.9	7 218.9	8.4	74.0
1998											
January	4 270.0	541.9	4 811.9	417.8	59.9	477.8	5 289.7	1 936.9	7 226.6	9.0	73.2
February	4 261.2	554.5	4 815.7	412.9	70.0	482.9	5 298.7	1 935.6	7 234.3	9.1	73.2
FEMALES											
1996											
December	2 122.5	1 551.2	3 673.7	231.1	112.4	343.5	4 017.2	3 326.8	7 344.1	8.6	54.7
1997											
January	2 071.8	1 472.1	3 543.9	251.2	102.3	353.5	3 897.5	3 454.5	7 352.0	9.1	53.0
February	2 067.3	1 544.8	3 612.1	262.8	129.8	392.5	4 004.6	3 355.3	7 359.9	9.8	54.4
March	2 044.9	1 592.8	3 637.7	234.8	122.7	357.4	3 995.2	3 372.6	7 367.8	8.9	54.2
April	2 054.1	1 589.6	3 643.7	230.6	108.8	339.4	3 983.1	3 393.4	7 376.5	8.5	54.0
May	2 051.9	1 576.7	3 628.6	220.8	113.0	333.8	3 962.4	3 422.8	7 385.2	8.4	53.7
June	2 031.6	1 604.1	3 635.8	215.6	98.7	314.4	3 950.1	3 443.8	7 393.9	8.0	53.4
July	2 092.2	1 565.7	3 657.9	207.2	96.1	303.3	3 961.2	3 441.4	7 402.6	7.7	53.5
August	2 025.0	1 561.3	3 586.3	213.9	102.9	316.8	3 903.1	3 508.3	7 411.4	8.1	52.7
September	2 084.6	1 625.2	3 709.8	213.3	110.2	323.5	4 033.3	3 386.8	7 420.1	8.0	54.4
October	2 072.2	1 579.8	3 652.1	208.1	101.7	309.8	3 961.8	3 467.4	7 429.2	7.8	53.3
November	2 081.6	1 618.5	3 700.0	204.2	95.3	299.6	3 999.6	3 438.7	7 438.3	7.5	53.8
December	2 133.9	1 584.9	3 718.8	218.0	99.1	317.1	4 035.9	3 411.5	7 447.4	7.9	54.2
1998											
January	2 085.9	1 488.5	3 574.4	236.0	103.1	339.1	3 913.6	3 540.8	7 454.3	8.7	52.5
February	2 086.7	1 559.7	3 646.4	244.8	114.7	359.5	4 005.9	3 455.3	7 461.2	9.0	53.7
PERSONS											
1996											
December	6 400.1	2 096.4	8 496.5	628.2	177.4	805.7	9 302.2	5 158.8	14 461.0	8.7	64.3
1997											
January	6 293.0	2 003.3	8 296.3	686.2	167.6	853.8	9 150.1	5 326.0	14 476.2	9.3	63.2
February	6 277.9	2 072.0	8 349.9	714.5	191.6	906.1	9 256.1	5 235.2	14 491.3	9.8	63.9
March	6 231.5	2 161.8	8 393.3	653.2	192.2	845.4	9 238.7	5 267.8	14 506.5	9.2	63.7
April	6 243.5	2 167.6	8 411.2	627.5	172.2	799.6	9 210.8	5 312.8	14 523.6	8.7	63.4
May	6 235.5	2 153.8	8 389.3	623.7	168.2	791.9	9 181.2	5 359.6	14 540.8	8.6	63.1
June	6 222.6	2 195.5	8 418.1	600.1	150.7	750.8	9 168.9	5 389.1	14 558.0	8.2	63.0
July	6 323.5	2 128.6	8 452.1	604.7	146.2	750.9	9 203.0	5 372.4	14 575.4	8.2	63.1
August	6 178.4	2 137.1	8 315.5	612.4	152.2	764.6	9 080.1	5 512.7	14 592.8	8.4	62.2
September	6 320.2	2 206.2	8 526.4	612.8	180.2	793.0	9 319.4	5 290.9	14 610.3	8.5	63.8
October	6 306.7	2 157.2	8 463.9	578.3	158.1	736.4	9 200.3	5 428.6	14 628.9	8.0	62.9
November	6 320.4	2 201.1	8 521.5	582.5	154.3	736.8	9 258.3	5 389.3	14 647.6	8.0	63.2
December	6 443.6	2 171.7	8 615.2	598.0	165.7	763.6	9 378.9	5 287.4	14 666.3	8.1	63.9
1998											
January	6 355.9	2 030.4	8 386.3	653.9	163.0	816.9	9 203.2	5 477.7	14 680.9	8.9	62.7
February	6 347.9	2 114.2	8 462.1	657.7	184.8	842.5	9 304.6	5 390.9	14 695.5	9.1	63.3

LABOUR FORCE STATUS (AGED 15 AND OVER): **Seasonally adjusted(a)**

Month	EMPLOYED.....			UNEMPLOYED.....			Labour force '000	Unemp- loyment rate %	Partic- ipation rate %
	Full time '000	Part time '000	Total '000	Looking for f/t work '000	Looking for p/t work '000	Total '000			
MALES									
1996									
December	4 215.8	547.1	4 763.0	397.3	60.8	458.1	5 221.1	8.8	73.4
1997									
January	4 223.8	560.0	4 783.7	394.8	59.5	454.3	5 238.1	8.7	73.5
February	4 207.1	551.8	4 758.9	414.6	57.1	471.8	5 230.6	9.0	73.3
March	4 203.4	559.3	4 762.7	409.8	59.3	469.1	5 231.8	9.0	73.3
April	4 201.6	567.5	4 769.1	404.2	60.7	464.8	5 233.9	8.9	73.2
May	4 193.5	572.4	4 765.9	405.6	57.7	463.3	5 229.2	8.9	73.1
June	4 199.9	578.6	4 778.5	394.5	57.5	452.0	5 230.6	8.6	73.0
July	4 207.8	568.7	4 776.6	417.7	56.7	474.4	5 251.0	9.0	73.2
August	4 195.4	567.0	4 762.4	406.5	55.8	462.4	5 224.7	8.8	72.8
September	4 224.2	566.7	4 790.9	399.5	64.7	464.3	5 255.2	8.8	73.1
October	4 233.3	574.3	4 807.6	391.4	59.6	451.0	5 258.6	8.6	73.0
November	4 247.0	584.5	4 831.5	391.5	66.4	457.9	5 289.4	8.7	73.4
December	4 248.4	587.8	4 836.3	382.5	62.6	445.1	5 281.4	8.4	73.2
1998									
January	4 271.4	572.1	4 843.5	378.6	54.9	433.5	5 277.0	8.2	73.0
February	4 257.3	580.6	4 837.8	379.2	64.8	444.0	5 281.9	8.4	73.0
FEMALES									
1996									
December	2 077.9	1 554.6	3 632.6	227.2	114.7	341.8	3 974.4	8.6	54.1
1997									
January	2 070.7	1 568.5	3 639.1	229.6	106.4	336.0	3 975.1	8.5	54.1
February	2 073.7	1 583.3	3 657.1	225.4	110.3	335.7	3 992.8	8.4	54.3
March	2 047.8	1 575.3	3 623.1	225.5	106.2	331.6	3 954.8	8.4	53.7
April	2 067.8	1 570.9	3 638.7	229.3	106.2	335.5	3 974.2	8.4	53.9
May	2 064.4	1 558.3	3 622.7	228.2	116.7	344.9	3 967.7	8.7	53.7
June	2 047.8	1 569.7	3 617.5	224.3	106.7	331.0	3 948.6	8.4	53.4
July	2 072.1	1 565.5	3 637.6	219.8	106.2	326.0	3 963.6	8.2	53.5
August	2 060.2	1 566.2	3 626.5	224.9	110.2	335.1	3 961.6	8.5	53.5
September	2 071.6	1 584.5	3 656.1	218.3	104.6	322.9	3 979.0	8.1	53.6
October	2 066.0	1 586.7	3 652.7	218.7	103.8	322.6	3 975.2	8.1	53.5
November	2 077.3	1 598.4	3 675.7	219.0	101.8	320.8	3 996.5	8.0	53.7
December	2 089.3	1 588.4	3 677.7	215.2	101.2	316.4	3 994.1	7.9	53.6
1998									
January	2 086.1	1 585.0	3 671.1	214.5	106.9	321.3	3 992.5	8.0	53.6
February	2 093.3	1 598.2	3 691.5	209.5	97.4	306.9	3 998.5	7.7	53.6
PERSONS									
1996									
December	6 293.8	2 101.7	8 395.5	624.5	175.5	800.0	9 195.5	8.7	63.6
1997									
January	6 294.4	2 128.4	8 422.9	624.4	165.9	790.4	9 213.2	8.6	63.6
February	6 280.8	2 135.1	8 416.0	640.0	167.4	807.5	9 223.4	8.8	63.6
March	6 251.2	2 134.6	8 385.8	635.3	165.5	800.8	9 186.6	8.7	63.3
April	6 269.4	2 138.4	8 407.8	633.4	166.9	800.3	9 208.1	8.7	63.4
May	6 257.9	2 130.7	8 388.6	633.8	174.5	808.2	9 196.8	8.8	63.2
June	6 247.7	2 148.4	8 396.1	618.8	164.3	783.1	9 179.2	8.5	63.1
July	6 280.0	2 134.2	8 414.2	637.5	162.9	800.4	9 214.6	8.7	63.2
August	6 255.6	2 133.2	8 388.8	631.4	166.1	797.5	9 186.3	8.7	63.0
September	6 295.8	2 151.2	8 447.0	617.8	169.3	787.1	9 234.2	8.5	63.2
October	6 299.3	2 161.0	8 460.3	610.1	163.4	773.5	9 233.8	8.4	63.1
November	6 324.3	2 182.9	8 507.2	610.5	168.2	778.7	9 285.9	8.4	63.4
December	6 337.8	2 176.2	8 514.0	597.7	163.8	761.5	9 275.5	8.2	63.2
1998									
January	6 357.5	2 157.1	8 514.6	593.1	161.8	754.8	9 269.5	8.1	63.1
February	6 350.6	2 178.8	8 529.4	588.7	162.2	751.0	9 280.3	8.1	63.2

(a) Revised due to annual seasonal reanalysis.

LABOUR FORCE STATUS (AGED 15 AND OVER): Trend(a)

Month	EMPLOYED.....			UNEMPLOYED.....			Labour force '000	Unemp- loyment rate %	Partic- ipation rate %
	Full time '000	Part time '000	Total '000	Looking for f/t work '000	Looking for p/t work '000	Total '000			
MALES									
1996									
December	4 215.5	551.4	4 766.9	403.4	58.8	462.2	5 229.1	8.8	73.5
1997									
January	4 213.6	553.7	4 767.4	403.2	59.0	462.2	5 229.6	8.8	73.4
February	4 210.2	557.4	4 767.7	403.9	59.2	463.1	5 230.7	8.9	73.3
March	4 205.5	562.1	4 767.6	405.3	58.9	464.2	5 231.8	8.9	73.3
April	4 200.8	566.5	4 767.2	406.5	58.4	464.9	5 232.1	8.9	73.2
May	4 198.0	569.3	4 767.3	407.0	58.0	464.9	5 232.3	8.9	73.1
June	4 198.4	570.6	4 769.0	406.6	57.7	464.4	5 233.3	8.9	73.1
July	4 202.4	571.0	4 773.4	405.5	58.3	463.8	5 237.2	8.9	73.0
August	4 210.0	571.7	4 781.7	403.4	59.3	462.7	5 244.4	8.8	73.0
September	4 220.2	572.9	4 793.1	400.0	60.4	460.4	5 253.6	8.8	73.1
October	4 231.7	575.1	4 806.8	395.0	61.4	456.4	5 263.2	8.7	73.1
November	4 242.6	577.7	4 820.3	389.5	61.9	451.5	5 271.7	8.6	73.1
December	4 252.1	579.7	4 831.9	384.6	62.0	446.6	5 278.5	8.5	73.1
1998									
January	4 259.9	581.1	4 841.0	380.3	61.9	442.2	5 283.2	8.4	73.1
February	4 266.2	581.8	4 848.0	377.7	61.8	439.5	5 287.4	8.3	73.1
FEMALES									
1996									
December	2 074.4	1 558.1	3 632.5	225.6	108.7	334.2	3 966.7	8.4	54.0
1997									
January	2 070.1	1 566.3	3 636.5	226.3	108.8	335.1	3 971.6	8.4	54.0
February	2 066.4	1 571.5	3 637.8	227.1	108.9	336.0	3 973.9	8.5	54.0
March	2 063.1	1 572.8	3 635.9	227.5	109.0	336.6	3 972.5	8.5	53.9
April	2 060.7	1 571.0	3 631.7	227.2	109.2	336.5	3 968.1	8.5	53.8
May	2 059.8	1 568.0	3 627.8	226.2	109.3	335.5	3 963.4	8.5	53.7
June	2 060.1	1 566.5	3 626.6	224.8	109.1	333.9	3 960.5	8.4	53.6
July	2 061.7	1 568.5	3 630.2	223.3	108.3	331.7	3 961.8	8.4	53.5
August	2 064.4	1 573.4	3 637.7	221.8	107.0	328.8	3 966.5	8.3	53.5
September	2 068.1	1 579.5	3 647.6	220.2	105.6	325.8	3 973.4	8.2	53.5
October	2 072.7	1 585.0	3 657.7	218.8	104.3	323.1	3 980.8	8.1	53.6
November	2 078.0	1 588.9	3 666.8	217.3	103.3	320.6	3 987.4	8.0	53.6
December	2 083.0	1 591.6	3 674.5	215.5	102.4	317.9	3 992.5	8.0	53.6
1998									
January	2 087.4	1 593.6	3 681.0	213.8	101.5	315.3	3 996.3	7.9	53.6
February	2 091.9	1 594.8	3 686.6	212.0	100.7	312.6	3 999.3	7.8	53.6
PERSONS									
1996									
December	6 289.9	2 109.4	8 399.4	629.0	167.5	796.5	9 195.8	8.7	63.6
1997									
January	6 283.8	2 120.1	8 403.8	629.5	167.8	797.3	9 201.2	8.7	63.6
February	6 276.6	2 128.9	8 405.5	631.0	168.1	799.1	9 204.6	8.7	63.5
March	6 268.7	2 134.9	8 403.5	632.8	168.0	800.8	9 204.3	8.7	63.4
April	6 261.5	2 137.4	8 398.9	633.7	167.7	801.4	9 200.3	8.7	63.3
May	6 257.8	2 137.4	8 395.1	633.2	167.3	800.5	9 195.6	8.7	63.2
June	6 258.5	2 137.1	8 395.6	631.4	166.9	798.3	9 193.8	8.7	63.2
July	6 264.1	2 139.5	8 403.6	628.8	166.6	795.5	9 199.1	8.6	63.1
August	6 274.3	2 145.1	8 419.4	625.2	166.3	791.5	9 210.9	8.6	63.1
September	6 288.3	2 152.4	8 440.8	620.2	166.0	786.2	9 227.0	8.5	63.2
October	6 304.4	2 160.0	8 464.5	613.8	165.7	779.5	9 244.0	8.4	63.2
November	6 320.6	2 166.5	8 487.1	606.8	165.3	772.0	9 259.1	8.3	63.2
December	6 335.1	2 171.3	8 506.4	600.1	164.4	764.5	9 271.0	8.2	63.2
1998									
January	6 347.3	2 174.7	8 522.0	594.1	163.5	757.6	9 279.5	8.2	63.2
February	6 358.1	2 176.6	8 534.6	589.7	162.4	752.1	9 286.7	8.1	63.2

(a) Revised due to annual seasonal reanalysis.

UNEMPLOYED PERSONS: Original

Month	NUMBER OF UNEMPLOYED PERSONS.....					UNEMPLOYMENT RATE.....					UNEMPLOYMENT TO POPULATION RATIO	
	Aged 15-19 looking for f/t work	Aged 20 and over looking for f/t work	Total looking for f/t work	Looking for p/t work	Total	Aged 15-19 looking for f/t work	Aged 20 and over looking for f/t work	Total looking for f/t work	Looking for p/t work	Total	Aged 15-19 looking for f/t work	Aged 20 and over looking for f/t work
	'000	'000	'000	'000	'000	%	%	%	%	%	%	%
MALES												
1996												
December	67.3	329.8	397.1	65.0	462.1	29.3	7.4	8.5	10.7	8.7	10.3	5.1
1997												
January	60.5	374.5	435.0	65.3	500.3	26.7	8.5	9.3	10.9	9.5	9.2	5.8
February	62.6	389.1	451.7	61.9	513.6	29.1	8.7	9.7	10.5	9.8	9.5	6.0
March	55.2	363.2	418.4	69.5	487.9	28.4	8.2	9.1	10.9	9.3	8.4	5.6
April	50.2	346.7	396.9	63.3	460.2	25.3	7.9	8.7	9.9	8.8	7.6	5.3
May	51.8	351.1	402.9	55.2	458.1	27.7	8.0	8.8	8.7	8.8	7.9	5.4
June	47.9	336.5	384.4	52.0	436.4	26.7	7.7	8.4	8.1	8.4	7.3	5.2
July	47.1	350.5	397.5	50.1	447.6	24.5	7.9	8.6	8.2	8.5	7.1	5.4
August	44.4	354.1	398.5	49.4	447.8	25.1	8.1	8.8	7.9	8.7	6.7	5.4
September	44.7	354.8	399.5	70.0	469.5	24.0	8.0	8.6	10.8	8.9	6.8	5.4
October	44.7	325.5	370.2	56.5	426.7	23.3	7.4	8.0	8.9	8.1	6.8	5.0
November	43.7	334.5	378.3	59.0	437.2	23.9	7.5	8.2	9.2	8.3	6.6	5.1
December	56.9	323.1	380.0	66.5	446.5	27.2	7.2	8.1	10.2	8.4	8.6	4.9
1998												
January	59.2	358.6	417.8	59.9	477.8	26.9	8.0	8.9	10.0	9.0	8.9	5.5
February	52.3	360.7	412.9	70.0	482.9	25.3	8.1	8.8	11.2	9.1	7.8	5.5
FEMALES												
1996												
December	51.7	179.4	231.1	112.4	343.5	36.6	8.1	9.8	6.8	8.6	8.3	2.7
1997												
January	48.8	202.4	251.2	102.3	353.5	34.1	9.3	10.8	6.5	9.1	7.8	3.0
February	40.6	222.2	262.8	129.8	392.5	32.7	10.1	11.3	7.8	9.8	6.5	3.3
March	36.5	198.3	234.8	122.7	357.4	32.3	9.2	10.3	7.1	8.9	5.8	2.9
April	35.3	195.3	230.6	108.8	339.4	32.3	9.0	10.1	6.4	8.5	5.6	2.9
May	30.3	190.5	220.8	113.0	333.8	29.3	8.8	9.7	6.7	8.4	4.8	2.8
June	31.6	184.1	215.6	98.7	314.4	31.5	8.6	9.6	5.8	8.0	5.0	2.7
July	28.4	178.8	207.2	96.1	303.3	25.5	8.2	9.0	5.8	7.7	4.5	2.6
August	30.5	183.4	213.9	102.9	316.8	29.7	8.6	9.6	6.2	8.1	4.9	2.7
September	29.7	183.6	213.3	110.2	323.5	28.0	8.4	9.3	6.3	8.0	4.7	2.7
October	30.9	177.2	208.1	101.7	309.8	28.6	8.2	9.1	6.0	7.8	4.9	2.6
November	34.1	170.2	204.2	95.3	299.6	33.6	7.8	8.9	5.6	7.5	5.4	2.5
December	45.1	172.9	218.0	99.1	317.1	34.5	7.8	9.3	5.9	7.9	7.1	2.5
1998												
January	52.3	183.8	236.0	103.1	339.1	36.9	8.4	10.2	6.5	8.7	8.3	2.7
February	43.3	201.5	244.8	114.7	359.5	34.2	9.1	10.5	6.9	9.0	6.8	3.0
PERSONS												
1996												
December	119.0	509.2	628.2	177.4	805.7	32.1	7.6	8.9	7.8	8.7	9.3	3.9
1997												
January	109.3	576.9	686.2	167.6	853.8	29.6	8.7	9.8	7.7	9.3	8.5	4.4
February	103.2	611.2	714.5	191.6	906.1	30.4	9.2	10.2	8.5	9.8	8.1	4.6
March	91.7	561.5	653.2	192.2	845.4	29.8	8.5	9.5	8.2	9.2	7.1	4.2
April	85.5	542.0	627.5	172.2	799.6	27.8	8.3	9.1	7.4	8.7	6.7	4.1
May	82.0	541.7	623.7	168.2	791.9	28.3	8.2	9.1	7.2	8.6	6.4	4.1
June	79.5	520.6	600.1	150.7	750.8	28.4	8.0	8.8	6.4	8.2	6.2	3.9
July	75.4	529.3	604.7	146.2	750.9	24.9	8.0	8.7	6.4	8.2	5.9	4.0
August	74.9	537.5	612.4	152.2	764.6	26.8	8.3	9.0	6.6	8.4	5.8	4.0
September	74.5	538.4	612.8	180.2	793.0	25.4	8.1	8.8	7.6	8.5	5.8	4.0
October	75.6	502.7	578.3	158.1	736.4	25.2	7.6	8.4	6.8	8.0	5.9	3.8
November	77.8	504.7	582.5	154.3	736.8	27.4	7.6	8.4	6.6	8.0	6.0	3.8
December	102.0	496.0	598.0	165.7	763.6	30.0	7.4	8.5	7.1	8.1	7.9	3.7
1998												
January	111.5	542.4	653.9	163.0	816.9	30.8	8.2	9.3	7.4	8.9	8.6	4.1
February	95.5	562.2	657.7	184.8	842.5	28.7	8.4	9.4	8.0	9.1	7.4	4.2

UNEMPLOYED PERSONS: Seasonally adjusted(a)

Month	NUMBER OF UNEMPLOYED PERSONS....					UNEMPLOYMENT RATE.....					UNEMPLOYMENT TO POPULATION RATIO	
	Aged 15-19 looking for f/t work '000	Aged 20 and over looking for f/t work '000	Total looking for f/t work '000	Looking for p/t work '000	Total '000	Aged 15-19 looking for f/t work %	Aged 20 and over looking for f/t work %	Total looking for f/t work %	Looking for p/t work %	Total %	Aged 15-19 looking for f/t work %	Aged 20 and over looking for f/t work %
MALES												
1996												
December	56.9	340.4	397.3	60.8	458.1	27.6	7.7	8.6	10.0	8.8	8.7	5.3
1997												
January	48.6	346.2	394.8	59.5	454.3	24.4	7.8	8.5	9.6	8.7	7.4	5.4
February	54.8	359.9	414.6	57.1	471.8	27.5	8.1	9.0	9.4	9.0	8.3	5.6
March	54.9	354.9	409.8	59.3	469.1	28.4	8.0	8.9	9.6	9.0	8.4	5.5
April	51.4	352.8	404.2	60.7	464.8	26.1	8.0	8.8	9.7	8.9	7.8	5.4
May	51.1	354.4	405.6	57.7	463.3	26.6	8.0	8.8	9.2	8.9	7.8	5.5
June	49.3	345.2	394.5	57.5	452.0	26.0	7.8	8.6	9.0	8.6	7.5	5.3
July	52.2	365.4	417.7	56.7	474.4	26.8	8.2	9.0	9.1	9.0	7.9	5.6
August	50.4	356.2	406.5	55.8	462.4	26.3	8.1	8.8	9.0	8.8	7.6	5.5
September	50.5	349.0	399.5	64.7	464.3	25.8	7.9	8.6	10.3	8.8	7.6	5.3
October	50.2	341.1	391.4	59.6	451.0	24.9	7.7	8.5	9.4	8.6	7.6	5.2
November	48.2	343.3	391.5	66.4	457.9	24.6	7.7	8.4	10.2	8.7	7.3	5.2
December	48.2	334.3	382.5	62.6	445.1	25.6	7.5	8.3	9.6	8.4	7.2	5.1
1998												
January	47.4	331.2	378.6	54.9	433.5	24.5	7.4	8.1	8.8	8.2	7.1	5.0
February	45.8	333.4	379.2	64.8	444.0	23.8	7.5	8.2	10.0	8.4	6.9	5.1
FEMALES												
1996												
December	42.3	184.9	227.2	114.7	341.8	34.6	8.5	9.9	6.9	8.6	6.8	2.8
1997												
January	38.4	191.2	229.6	106.4	336.0	31.9	8.8	10.0	6.4	8.5	6.1	2.8
February	33.2	192.2	225.4	110.3	335.7	29.2	8.8	9.8	6.5	8.4	5.3	2.9
March	35.6	189.8	225.5	106.2	331.6	30.6	8.8	9.9	6.3	8.4	5.7	2.8
April	37.4	191.9	229.3	106.2	335.5	32.3	8.8	10.0	6.3	8.4	6.0	2.8
May	31.7	196.5	228.2	116.7	344.9	29.2	9.0	10.0	7.0	8.7	5.1	2.9
June	33.7	190.6	224.3	106.7	331.0	31.4	8.8	9.9	6.4	8.4	5.4	2.8
July	33.2	186.6	219.8	106.2	326.0	29.6	8.6	9.6	6.4	8.2	5.3	2.8
August	33.4	191.5	224.9	110.2	335.1	29.9	8.8	9.8	6.6	8.5	5.3	2.8
September	33.1	185.1	218.3	104.6	322.9	30.0	8.5	9.5	6.2	8.1	5.3	2.7
October	35.9	182.9	218.7	103.8	322.6	32.0	8.4	9.6	6.1	8.1	5.7	2.7
November	37.9	181.1	219.0	101.8	320.8	34.6	8.3	9.5	6.0	8.0	6.0	2.7
December	36.9	178.3	215.2	101.2	316.4	32.5	8.1	9.3	6.0	7.9	5.8	2.6
1998												
January	41.1	173.4	214.5	106.9	321.3	34.7	7.9	9.3	6.3	8.0	6.5	2.5
February	35.4	174.2	209.5	97.4	306.9	30.7	8.0	9.1	5.7	7.7	5.6	2.6
PERSONS												
1996												
December	99.2	525.3	624.5	175.5	800.0	30.2	8.0	9.0	7.7	8.7	7.7	4.0
1997												
January	87.0	537.4	624.4	165.9	790.4	27.2	8.1	9.0	7.2	8.6	6.8	4.1
February	88.0	552.0	640.0	167.4	807.5	28.1	8.4	9.2	7.3	8.8	6.9	4.2
March	90.6	544.7	635.3	165.5	800.8	29.2	8.3	9.2	7.2	8.7	7.1	4.1
April	88.7	544.7	633.4	166.9	800.3	28.4	8.3	9.2	7.2	8.7	6.9	4.1
May	82.9	550.9	633.8	174.5	808.2	27.5	8.4	9.2	7.6	8.8	6.4	4.2
June	83.0	535.8	618.8	164.3	783.1	28.0	8.2	9.0	7.1	8.5	6.5	4.0
July	85.4	552.1	637.5	162.9	800.4	27.8	8.4	9.2	7.1	8.7	6.6	4.2
August	83.8	547.7	631.4	166.1	797.5	27.6	8.3	9.2	7.2	8.7	6.5	4.1
September	83.6	534.2	617.8	169.3	787.1	27.3	8.1	8.9	7.3	8.5	6.5	4.0
October	86.1	524.0	610.1	163.4	773.5	27.4	7.9	8.8	7.0	8.4	6.7	3.9
November	86.1	524.4	610.5	168.2	778.7	28.1	7.9	8.8	7.2	8.4	6.7	3.9
December	85.1	512.6	597.7	163.8	761.5	28.2	7.7	8.6	7.0	8.2	6.6	3.8
1998												
January	88.5	504.6	593.1	161.8	754.8	28.4	7.6	8.5	7.0	8.1	6.8	3.8
February	81.2	507.6	588.7	162.2	751.0	26.4	7.7	8.5	6.9	8.1	6.2	3.8

(a) Revised due to annual seasonal reanalysis.

UNEMPLOYED PERSONS: Trend(a)

Month	NUMBER OF UNEMPLOYED PERSONS.....					UNEMPLOYMENT RATE.....					UNEMPLOYMENT TO POPULATION RATIO	
	<i>Aged 15-19 looking for f/t work</i>	<i>Aged 20 and over looking for f/t work</i>	<i>Total looking for f/t work</i>	<i>Looking for p/t work</i>	<i>Total</i>	<i>Aged 15-19 looking for f/t work</i>	<i>Aged 20 and over looking for f/t work</i>	<i>Total looking for f/t work</i>	<i>Looking for p/t work</i>	<i>Total</i>	<i>Aged 15-19 looking for f/t work</i>	<i>Aged 20 and over looking for f/t work</i>
	'000	'000	'000	'000	'000	%	%	%	%	%	%	%
MALES												
1996												
December	54.6	348.8	403.4	58.8	462.2	26.8	7.9	8.7	9.6	8.8	8.3	5.4
1997												
January	54.0	349.1	403.2	59.0	462.2	26.8	7.9	8.7	9.6	8.8	8.2	5.4
February	53.3	350.6	403.9	59.2	463.1	26.8	7.9	8.8	9.6	8.9	8.1	5.4
March	52.6	352.7	405.3	58.9	464.2	26.8	8.0	8.8	9.5	8.9	8.0	5.4
April	52.0	354.5	406.5	58.4	464.9	26.8	8.0	8.8	9.4	8.9	7.9	5.5
May	51.5	355.5	407.0	58.0	464.9	26.7	8.1	8.8	9.2	8.9	7.8	5.5
June	51.2	355.5	406.6	57.7	464.4	26.6	8.1	8.8	9.2	8.9	7.8	5.5
July	50.8	354.7	405.5	58.3	463.8	26.3	8.0	8.8	9.3	8.9	7.7	5.4
August	50.5	352.9	403.4	59.3	462.7	26.0	8.0	8.7	9.4	8.8	7.6	5.4
September	50.2	349.7	400.0	60.4	460.4	25.7	7.9	8.7	9.5	8.8	7.6	5.4
October	49.7	345.3	395.0	61.4	456.4	25.4	7.8	8.5	9.7	8.7	7.5	5.3
November	48.9	340.7	389.5	61.9	451.5	25.1	7.7	8.4	9.7	8.6	7.4	5.2
December	48.0	336.6	384.6	62.0	446.6	24.8	7.6	8.3	9.7	8.5	7.2	5.1
1998												
January	47.2	333.1	380.3	61.9	442.2	24.5	7.5	8.2	9.6	8.4	7.1	5.1
February	46.6	331.1	377.7	61.8	439.5	24.3	7.4	8.1	9.6	8.3	7.0	5.0
FEMALES												
1996												
December	39.6	186.0	225.6	108.7	334.2	32.6	8.5	9.8	6.5	8.4	6.3	2.8
1997												
January	38.4	187.9	226.3	108.8	335.1	32.1	8.6	9.9	6.5	8.4	6.1	2.8
February	36.9	190.2	227.1	108.9	336.0	31.5	8.7	9.9	6.5	8.5	5.9	2.8
March	35.5	192.0	227.5	109.0	336.6	31.0	8.8	9.9	6.5	8.5	5.7	2.8
April	34.4	192.8	227.2	109.2	336.5	30.6	8.9	9.9	6.5	8.5	5.5	2.9
May	33.7	192.5	226.2	109.3	335.5	30.3	8.9	9.9	6.5	8.5	5.4	2.8
June	33.3	191.5	224.8	109.1	333.9	30.1	8.8	9.8	6.5	8.4	5.3	2.8
July	33.2	190.1	223.3	108.3	331.7	30.1	8.7	9.8	6.5	8.4	5.3	2.8
August	33.6	188.2	221.8	107.0	328.8	30.5	8.7	9.7	6.4	8.3	5.3	2.8
September	34.4	185.8	220.2	105.6	325.8	31.1	8.5	9.6	6.3	8.2	5.5	2.7
October	35.6	183.2	218.8	104.3	323.1	31.9	8.4	9.5	6.2	8.1	5.7	2.7
November	36.7	180.6	217.3	103.3	320.6	32.6	8.3	9.5	6.1	8.0	5.8	2.7
December	37.5	178.0	215.5	102.4	317.9	33.0	8.1	9.4	6.0	8.0	5.9	2.6
1998												
January	38.1	175.7	213.8	101.5	315.3	33.2	8.0	9.3	6.0	7.9	6.0	2.6
February	38.4	173.6	212.0	100.7	312.6	33.2	7.9	9.2	5.9	7.8	6.1	2.5
PERSONS												
1996												
December	94.2	534.7	629.0	167.5	796.5	28.9	8.1	9.1	7.4	8.7	7.4	4.1
1997												
January	92.4	537.1	629.5	167.8	797.3	28.8	8.1	9.1	7.3	8.7	7.2	4.1
February	90.2	540.9	631.0	168.1	799.1	28.6	8.2	9.1	7.3	8.7	7.0	4.1
March	88.1	544.7	632.8	168.0	800.8	28.4	8.3	9.2	7.3	8.7	6.9	4.1
April	86.4	547.3	633.7	167.7	801.4	28.2	8.3	9.2	7.3	8.7	6.7	4.1
May	85.2	548.0	633.2	167.3	800.5	28.0	8.3	9.2	7.3	8.7	6.6	4.1
June	84.4	547.0	631.4	166.9	798.3	27.9	8.3	9.2	7.2	8.7	6.6	4.1
July	84.0	544.8	628.8	166.6	795.5	27.7	8.3	9.1	7.2	8.6	6.5	4.1
August	84.1	541.1	625.2	166.3	791.5	27.6	8.2	9.1	7.2	8.6	6.5	4.1
September	84.7	535.6	620.2	166.0	786.2	27.6	8.1	9.0	7.2	8.5	6.6	4.0
October	85.3	528.5	613.8	165.7	779.5	27.8	8.0	8.9	7.1	8.4	6.6	4.0
November	85.6	521.2	606.8	165.3	772.0	27.8	7.9	8.8	7.1	8.3	6.6	3.9
December	85.5	514.6	600.1	164.4	764.5	27.8	7.8	8.7	7.0	8.2	6.6	3.8
1998												
January	85.3	508.8	594.1	163.5	757.6	27.7	7.7	8.6	7.0	8.2	6.6	3.8
February	85.0	504.7	589.7	162.4	752.1	27.6	7.6	8.5	6.9	8.1	6.5	3.8

(a) Revised due to annual seasonal reanalysis.

PERSONS AGED 15 TO 19—Education and Labour Force: **Original**—February 1998

	EMPLOYED.....			UNEMPLOYED.....			Labour force	Not in labour force	Civilian population aged 15-19	Unemployment rate	Participation rate
	Full time	Part time	Total	Looking for f/t work	Looking for p/t work	Total					
	'000	'000	'000	'000	'000	'000	'000	'000	'000	%	%
ATTENDING NEITHER SCHOOL NOR A TERTIARY EDUCATIONAL INSTITUTION FULL TIME											
Males	143.5	32.2	175.6	46.1	* 3.4	49.4	225.1	19.9	245.0	22.0	91.9
Females	75.0	46.7	121.8	39.6	* 2.9	42.5	164.2	34.3	198.6	25.9	82.7
Persons	218.5	78.9	297.4	85.7	6.2	91.9	389.3	54.3	443.6	23.6	87.8
ATTENDING A TERTIARY EDUCATIONAL INSTITUTION FULL TIME											
Males	10.0	44.7	54.7	* 3.5	11.0	14.6	69.3	41.4	110.7	21.0	62.6
Females	7.9	63.4	71.4	* 3.0	12.9	15.9	87.3	45.5	132.8	18.2	65.7
Persons	17.9	108.2	126.1	6.5	24.0	30.5	156.6	86.9	243.5	19.5	64.3
ATTENDING SCHOOL											
Males	* 0.9	72.0	72.9	* 2.7	22.2	24.9	97.7	213.2	310.9	25.4	31.4
Females	* 0.2	104.0	104.2	* 0.7	19.8	20.5	124.7	177.0	301.7	16.5	41.3
Persons	* 1.0	176.0	177.1	* 3.4	42.0	45.4	222.5	390.2	612.6	20.4	36.3
TOTAL											
Males	154.3	148.9	303.2	52.3	36.6	88.9	392.1	274.5	666.6	22.7	58.8
Females	83.1	214.2	297.3	43.3	35.6	78.9	376.3	256.8	633.1	21.0	59.4
Persons	237.5	363.1	600.5	95.5	72.3	167.8	768.3	531.4	1 299.7	21.8	59.1

LABOUR FORCE STATUS (AGED 15 & OVER)–States & Territories: **Original**–February 1998

	EMPLOYED.....			UNEMPLOYED.....			Labour force	Not in labour force	Civilian population aged 15 and over	Unemp-loyment rate	Partic-ipation rate
	Full time	Part time	Total	Looking for f/t work	Looking for p/t work	Total					
	'000	'000	'000	'000	'000	'000					
MALES											
New South Wales	1 431.8	167.3	1 599.2	129.3	21.5	150.7	1 749.9	692.5	2 442.4	8.6	71.6
Victoria	1 065.0	137.5	1 202.5	96.1	20.6	116.7	1 319.2	474.8	1 794.0	8.8	73.5
Queensland	792.1	113.1	905.2	87.2	14.2	101.4	1 006.6	335.7	1 342.3	10.1	75.0
South Australia	318.2	50.0	368.2	40.0	5.8	45.8	414.0	170.6	584.5	11.1	70.8
Western Australia	441.0	57.1	498.1	35.1	5.3	40.4	538.6	168.5	707.1	7.5	76.2
Tasmania	97.7	15.2	113.0	14.7	* 1.0	15.7	128.7	53.0	181.6	12.2	70.8
Northern Territory	41.7	4.0	45.7	3.0	* 0.7	3.7	49.4	16.7	66.1	7.5	74.7
Australian Capital Territory	73.7	10.3	83.9	7.5	* 0.9	8.4	92.4	23.8	116.1	9.1	79.5
Australia	4 261.2	554.5	4 815.7	412.9	70.0	482.9	5 298.7	1 935.6	7 234.3	9.1	73.2
FEMALES											
New South Wales	707.1	482.8	1 189.9	72.1	39.6	111.7	1 301.7	1 229.5	2 531.1	8.6	51.4
Victoria	526.6	387.3	913.8	62.9	27.9	90.8	1 004.6	867.5	1 872.2	9.0	53.7
Queensland	390.6	307.6	698.2	53.7	21.3	75.0	773.2	593.5	1 366.7	9.7	56.6
South Australia	148.2	132.1	280.2	21.5	9.7	31.1	311.3	293.7	605.1	10.0	51.5
Western Australia	197.1	173.1	370.3	24.4	9.2	33.6	403.8	309.9	713.7	8.3	56.6
Tasmania	44.0	39.3	83.3	5.9	2.9	8.9	92.2	95.6	187.8	9.6	49.1
Northern Territory	26.2	10.9	37.1	* 1.0	* 1.2	2.2	39.3	25.4	64.7	5.6	60.7
Australian Capital Territory	46.9	26.6	73.5	3.2	3.0	6.2	79.7	40.2	119.9	7.8	66.5
Australia	2 086.7	1 559.7	3 646.4	244.8	114.7	359.5	4 005.9	3 455.3	7 461.2	9.0	53.7
PERSONS											
New South Wales	2 138.9	650.1	2 789.1	201.4	61.1	262.4	3 051.5	1 922.0	4 973.5	8.6	61.4
Victoria	1 591.6	524.7	2 116.3	159.0	48.5	207.5	2 323.8	1 342.4	3 666.2	8.9	63.4
Queensland	1 182.7	420.7	1 603.4	140.9	35.5	176.5	1 779.8	929.1	2 709.0	9.9	65.7
South Australia	466.4	182.0	648.4	61.4	15.5	76.9	725.3	464.3	1 189.6	10.6	61.0
Western Australia	638.2	230.3	868.4	59.5	14.5	74.0	942.4	478.4	1 420.8	7.9	66.3
Tasmania	141.8	54.5	196.3	20.7	3.9	24.6	220.8	148.6	369.4	11.1	59.8
Northern Territory	67.9	15.0	82.8	4.1	1.8	5.9	88.7	42.2	130.9	6.6	67.8
Australian Capital Territory	120.5	36.9	157.4	10.8	3.9	14.7	172.1	64.0	236.1	8.5	72.9
Australia	6 347.9	2 114.2	8 462.1	657.7	184.8	842.5	9 304.6	5 390.9	14 695.5	9.1	63.3

UNEMPLOYED PERSONS—New South Wales, Victoria and Queensland: Original

Month	NUMBER OF UNEMPLOYED PERSONS.....					UNEMPLOYMENT RATE.....					UNEMPLOYMENT TO POPULATION RATIO	
	Aged 15-19 looking for f/t work	Aged 20 and over looking for f/t work	Total looking for f/t work	Looking for p/t work	Total	Aged 15-19 looking for f/t work	Aged 20 and over looking for f/t work	Total looking for f/t work	Looking for p/t work	Total	Aged 15-19 looking for f/t work	Aged 20 and over looking for f/t work
	'000	'000	'000	'000	'000	%	%	%	%	%	%	%
NEW SOUTH WALES												
1996												
December	37.4	154.0	191.4	53.3	244.7	30.6	6.8	8.0	7.6	7.9	8.8	3.4
1997												
January	35.0	173.2	208.1	49.9	258.0	27.7	7.7	8.8	7.4	8.5	8.3	3.9
February	35.9	186.8	222.7	64.5	287.2	30.5	8.3	9.4	9.2	9.4	8.5	4.2
March	27.7	171.8	199.4	57.7	257.1	26.0	7.6	8.5	8.0	8.4	6.5	3.8
April	29.2	160.5	189.8	53.9	243.6	26.9	7.2	8.1	7.4	7.9	6.9	3.6
May	28.2	166.7	194.9	50.4	245.3	27.8	7.5	8.4	6.9	8.0	6.6	3.7
June	28.7	152.2	181.0	40.5	221.4	31.0	6.9	7.9	5.7	7.3	6.8	3.4
July	24.1	167.9	192.1	46.0	238.1	24.3	7.5	8.2	6.5	7.8	5.7	3.7
August	23.0	162.6	185.6	42.4	228.0	24.8	7.4	8.1	6.1	7.7	5.4	3.6
September	20.1	169.4	189.5	54.2	243.7	21.6	7.5	8.1	7.3	7.9	4.7	3.7
October	24.7	164.6	189.3	46.9	236.2	24.9	7.4	8.1	6.8	7.8	5.8	3.6
November	22.0	159.0	181.1	44.8	225.9	23.2	7.1	7.7	6.1	7.4	5.2	3.5
December	27.5	155.6	183.1	47.6	230.8	25.6	6.9	7.7	6.5	7.4	6.4	3.4
1998												
January	35.2	163.3	198.5	45.8	244.3	29.0	7.3	8.4	6.7	8.0	8.2	3.6
February	28.3	173.1	201.4	61.1	262.4	26.2	7.8	8.6	8.6	8.6	6.6	3.8
VICTORIA												
1996												
December	25.8	141.2	167.0	48.4	215.4	34.4	8.4	9.6	8.2	9.2	8.2	4.3
1997												
January	21.9	150.6	172.5	40.7	213.2	29.4	9.1	9.9	7.4	9.3	7.0	4.6
February	19.9	165.3	185.2	48.9	234.1	30.4	9.8	10.6	8.5	10.1	6.3	5.0
March	19.8	148.3	168.1	52.5	220.6	33.0	9.0	9.9	8.7	9.6	6.3	4.5
April	16.7	143.4	160.2	49.7	209.9	28.9	8.7	9.4	8.3	9.1	5.3	4.3
May	17.3	146.5	163.8	44.7	208.4	31.1	8.9	9.6	7.6	9.1	5.5	4.4
June	15.3	149.4	164.6	42.9	207.5	27.1	9.0	9.6	7.1	9.0	4.8	4.5
July	15.1	139.5	154.6	39.7	194.3	24.0	8.4	9.0	6.8	8.5	4.8	4.2
August	16.3	141.6	157.9	44.2	202.1	29.8	8.7	9.4	7.6	8.9	5.2	4.3
September	14.7	145.2	159.9	51.7	211.6	24.5	8.8	9.3	8.4	9.1	4.6	4.4
October	16.7	124.7	141.4	42.5	183.9	26.1	7.6	8.3	7.1	8.0	5.3	3.7
November	18.0	124.7	142.7	41.8	184.5	33.2	7.6	8.4	6.9	8.0	5.7	3.7
December	26.4	115.9	142.3	49.3	191.7	34.8	7.0	8.2	8.1	8.2	8.3	3.5
1998												
January	26.2	136.6	162.8	48.9	211.8	35.9	8.2	9.4	8.7	9.2	8.3	4.1
February	23.1	135.9	159.0	48.5	207.5	32.1	8.1	9.1	8.5	8.9	7.3	4.1
QUEENSLAND												
1996												
December	26.8	96.3	123.0	37.7	160.7	33.0	7.9	9.4	9.0	9.3	10.9	4.0
1997												
January	27.4	121.2	148.6	37.8	186.4	35.5	10.0	11.5	9.3	11.0	11.1	5.0
February	23.5	128.1	151.5	32.9	184.5	32.5	10.4	11.6	7.8	10.7	9.5	5.3
March	21.1	123.1	144.2	37.6	181.8	34.1	10.1	11.3	8.5	10.6	8.6	5.1
April	16.1	120.7	136.8	31.1	167.9	27.0	10.0	10.8	7.0	9.8	6.5	5.0
May	16.7	115.3	132.0	34.9	166.9	29.6	9.5	10.4	8.0	9.8	6.7	4.8
June	15.8	102.5	118.3	31.2	149.5	28.1	8.5	9.4	6.7	8.7	6.4	4.2
July	18.7	104.8	123.5	26.5	150.0	28.6	8.5	9.5	6.1	8.7	7.6	4.3
August	16.9	114.6	131.5	29.3	160.8	29.9	9.3	10.2	6.8	9.4	6.8	4.7
September	18.2	102.3	120.5	37.0	157.4	29.6	8.4	9.4	8.0	9.0	7.3	4.2
October	16.1	99.6	115.7	34.9	150.6	27.0	8.1	9.0	7.5	8.6	6.5	4.1
November	18.3	103.9	122.2	33.6	155.9	31.8	8.4	9.5	7.4	8.9	7.3	4.2
December	23.1	102.0	125.0	31.3	156.3	32.4	8.1	9.4	7.1	8.9	9.2	4.2
1998												
January	22.6	111.8	134.4	30.8	165.2	30.5	9.0	10.2	7.3	9.5	9.0	4.6
February	18.0	122.9	140.9	35.5	176.5	26.7	9.8	10.6	7.8	9.9	7.1	5.0

UNEMPLOYED PERSONS—South Australia, Western Australia and Tasmania: **Original**

Month	NUMBER OF UNEMPLOYED PERSONS.....					UNEMPLOYMENT RATE.....					UNEMPLOYMENT TO POPULATION RATIO	
	Aged 15-19 looking for f/t work	Aged 20 and over looking for f/t work	Total looking for f/t work	Looking for p/t work	Total	Aged 15-19 looking for f/t work	Aged 20 and over looking for f/t work	Total looking for f/t work	Looking for p/t work	Total	Aged 15-19 looking for f/t work	Aged 20 and over looking for f/t work
	'000	'000	'000	'000	'000	%	%	%	%	%	%	%
SOUTH AUSTRALIA												
1996												
December	10.9	47.1	58.0	12.6	70.6	39.6	9.2	10.8	6.4	9.6	11.1	4.4
1997												
January	8.2	51.4	59.6	14.1	73.6	32.5	10.1	11.2	7.3	10.2	8.4	4.7
February	8.6	51.3	59.9	14.4	74.4	34.7	10.1	11.2	7.2	10.1	8.8	4.7
March	7.6	48.3	55.9	15.2	71.1	34.0	9.7	10.7	7.0	9.6	7.7	4.5
April	10.6	46.8	57.4	13.8	71.1	42.1	9.4	10.9	6.7	9.7	10.8	4.3
May	8.4	49.0	57.4	12.4	69.8	37.1	9.8	10.9	6.1	9.6	8.6	4.5
June	7.6	47.6	55.2	13.0	68.2	36.2	9.3	10.4	6.4	9.3	7.7	4.4
July	7.7	48.0	55.7	12.3	68.0	34.9	9.4	10.5	6.2	9.3	7.8	4.4
August	6.5	48.7	55.2	12.4	67.6	28.7	9.8	10.6	6.1	9.3	6.6	4.5
September	7.2	51.2	58.4	13.8	72.2	31.9	10.1	11.1	6.6	9.8	7.3	4.7
October	7.4	49.8	57.1	12.7	69.8	32.3	9.9	10.9	6.2	9.5	7.5	4.6
November	6.5	50.8	57.4	11.9	69.3	28.8	10.0	10.8	5.8	9.5	6.6	4.7
December	8.9	49.7	58.5	12.5	71.0	35.0	9.6	10.8	6.4	9.7	9.0	4.6
1998												
January	9.2	55.0	64.2	14.7	78.9	32.5	10.8	12.0	7.9	10.9	9.3	5.0
February	8.5	52.9	61.4	15.5	76.9	34.4	10.5	11.6	7.9	10.6	8.6	4.9
WESTERN AUSTRALIA												
1996												
December	12.0	43.7	55.7	15.0	70.8	26.5	6.8	8.1	6.3	7.6	9.3	3.5
1997												
January	10.2	50.3	60.4	15.7	76.1	22.0	7.8	8.8	6.7	8.3	7.8	4.0
February	9.6	48.6	58.2	20.8	79.1	23.3	7.5	8.5	8.5	8.5	7.4	3.9
March	9.3	45.6	54.9	18.5	73.4	24.0	7.2	8.2	7.4	8.0	7.2	3.6
April	7.5	44.4	51.9	14.8	66.8	18.7	7.0	7.7	6.1	7.3	5.8	3.5
May	6.7	39.8	46.5	16.7	63.2	17.3	6.2	6.9	7.1	6.9	5.2	3.1
June	6.9	42.4	49.3	14.9	64.2	17.7	6.7	7.3	6.1	7.0	5.3	3.3
July	4.9	43.4	48.3	13.3	61.6	12.9	6.7	7.0	5.8	6.7	3.7	3.4
August	6.4	43.1	49.5	14.8	64.3	16.9	6.7	7.3	6.1	7.0	4.9	3.4
September	8.6	42.9	51.5	13.7	65.2	21.5	6.5	7.4	5.7	6.9	6.6	3.4
October	5.9	36.9	42.8	12.6	55.4	15.3	5.8	6.3	5.2	6.0	4.5	2.9
November	8.4	39.2	47.6	13.7	61.4	21.5	6.1	6.9	5.7	6.6	6.4	3.1
December	10.9	43.3	54.1	14.1	68.2	26.0	6.5	7.7	5.8	7.2	8.2	3.4
1998												
January	11.7	47.9	59.5	13.4	73.0	26.2	7.2	8.4	5.9	7.8	8.8	3.7
February	11.9	47.5	59.5	14.5	74.0	27.9	7.3	8.5	5.9	7.9	9.0	3.7
TASMANIA												
1996												
December	3.8	16.2	20.1	5.1	25.1	35.0	10.6	12.2	8.5	11.2	11.1	4.8
1997												
January	4.0	16.5	20.5	4.4	24.9	35.1	11.1	12.8	7.3	11.3	11.7	4.9
February	3.7	17.9	21.6	4.0	25.6	32.8	11.6	13.1	7.1	11.6	10.9	5.3
March	3.8	15.1	18.9	4.6	23.5	35.1	10.3	12.0	7.4	10.7	11.0	4.5
April	3.5	15.9	19.4	3.4	22.8	34.4	10.7	12.3	5.7	10.5	10.2	4.7
May	3.1	14.2	17.3	4.2	21.5	34.3	9.6	11.0	6.9	9.9	9.1	4.2
June	3.3	15.8	19.1	3.6	22.8	37.7	10.9	12.4	6.3	10.7	9.7	4.7
July	3.4	15.4	18.9	4.5	23.4	38.6	10.7	12.3	7.3	10.9	9.9	4.6
August	4.0	15.6	19.6	4.0	23.6	43.3	10.8	12.8	6.5	11.0	11.7	4.6
September	4.0	16.4	20.4	4.2	24.6	42.5	11.1	13.0	7.0	11.4	11.7	4.9
October	3.3	17.1	20.4	4.3	24.7	36.0	11.4	12.8	7.4	11.4	9.5	5.1
November	2.9	16.3	19.2	4.6	23.8	32.1	11.0	12.2	7.6	10.9	8.3	4.9
December	3.0	18.7	21.7	6.1	27.9	30.5	12.3	13.4	10.0	12.5	8.8	5.6
1998												
January	3.7	16.5	20.2	4.9	25.1	34.7	11.0	12.6	8.5	11.5	10.7	4.9
February	3.5	17.2	20.7	3.9	24.6	35.1	11.3	12.7	6.7	11.1	10.0	5.1

UNEMPLOYED PERSONS—Northern Territory and Australian Capital Territory: Original

Month	NUMBER OF UNEMPLOYED PERSONS.....					UNEMPLOYMENT RATE.....					UNEMPLOYMENT TO POPULATION RATIO	
	Aged 15-19 looking for f/t work	Aged 20 and over looking for f/t work	Total looking for f/t work	Looking for p/t work	Total	Aged 15-19 looking for f/t work	Aged 20 and over looking for f/t work	Total looking for f/t work	Looking for p/t work	Total	Aged 15-19 looking for f/t work	Aged 20 and over looking for f/t work
	'000	'000	'000	'000	'000	%	%	%	%	%	%	%
NORTHERN TERRITORY												
1996												
December	* 0.5	2.7	3.2	* 1.1	4.3	* 14.3	4.2	4.7	* 5.8	5.0	* 3.6	2.4
1997												
January	* 0.9	4.2	5.1	* 1.1	6.2	* 23.7	6.8	7.7	* 6.3	7.4	* 6.7	3.7
February	* 0.7	4.1	4.9	* 1.0	5.9	* 24.8	6.5	7.3	* 4.8	6.7	* 5.6	3.6
March	* 0.8	2.6	3.4	1.6	5.0	* 25.4	4.0	5.0	7.8	5.6	* 5.8	2.3
April	* 0.7	3.6	4.3	* 1.2	5.5	* 26.2	5.6	6.4	* 5.8	6.2	* 5.5	3.1
May	* 0.8	3.6	4.4	* 0.7	5.1	* 25.9	5.4	6.4	* 3.3	5.6	* 6.4	3.1
June	* 0.6	3.6	4.2	* 0.6	4.8	* 23.4	5.4	6.0	* 2.8	5.3	* 4.5	3.1
July	* 0.6	3.0	3.6	* 0.9	4.4	* 18.6	4.5	5.1	* 3.9	4.8	* 4.7	2.5
August	* 0.4	3.3	3.7	* 1.0	4.8	* 16.2	5.4	5.8	* 4.3	5.4	* 3.3	2.9
September	* 0.4	3.4	3.8	* 0.9	4.7	* 14.3	4.9	5.3	* 5.0	5.3	* 3.4	2.9
October	* 0.4	1.5	1.8	* 0.9	2.7	* 11.9	2.1	2.5	* 4.7	3.0	* 2.9	1.3
November	* 0.1	3.2	3.2	* 0.3	3.5	* 2.9	4.4	4.3	* 1.6	3.8	* 0.6	2.7
December	* 0.3	2.8	3.1	* 1.1	4.3	* 8.9	3.9	4.2	* 6.3	4.6	* 2.6	2.4
1998												
January	* 0.6	2.6	3.2	1.3	4.5	* 12.3	3.9	4.5	7.2	5.0	* 4.2	2.2
February	* 0.6	3.5	4.1	1.8	5.9	* 17.2	5.1	5.7	10.8	6.6	* 4.3	3.0
AUSTRALIAN CAPITAL TERRITORY												
1996												
December	1.8	8.1	9.9	4.2	14.1	37.2	6.7	7.9	10.0	8.4	7.8	3.8
1997												
January	1.8	9.5	11.3	3.9	15.2	38.3	7.7	8.8	10.3	9.2	7.7	4.5
February	1.3	9.1	10.4	5.0	15.4	35.8	7.4	8.2	11.6	9.0	5.7	4.3
March	1.6	6.7	8.3	4.6	12.9	43.6	5.5	6.6	10.7	7.6	7.3	3.2
April	1.0	6.7	7.7	4.3	11.9	31.0	5.4	6.1	9.7	7.0	4.5	3.1
May	* 0.9	6.6	7.5	4.2	11.7	* 26.3	5.3	5.8	9.5	6.8	* 3.8	3.1
June	1.3	7.0	8.3	4.0	12.3	42.5	5.6	6.5	9.4	7.2	5.9	3.3
July	* 0.8	7.3	8.1	3.0	11.1	* 25.1	5.8	6.3	7.3	6.6	* 3.7	3.4
August	1.3	8.0	9.3	4.1	13.4	43.0	6.5	7.3	9.7	7.9	5.9	3.8
September	1.2	7.7	8.8	4.7	13.6	36.7	6.0	6.8	11.3	7.9	5.2	3.6
October	1.2	8.5	9.7	3.4	13.1	32.2	6.8	7.5	8.4	7.7	5.3	4.0
November	1.5	7.5	9.1	3.5	12.5	37.4	6.0	7.0	8.9	7.4	7.0	3.5
December	1.9	8.1	10.0	3.5	13.5	43.3	6.5	7.7	8.8	8.0	8.5	3.8
1998												
January	2.4	8.7	11.1	3.1	14.2	51.7	7.1	8.7	8.3	8.6	10.7	4.1
February	1.7	9.0	10.8	3.9	14.7	33.0	7.2	8.2	9.6	8.5	7.8	4.2

LABOUR FORCE STATUS (AGED 15 AND OVER)—New South Wales(a)

SEASONALLY ADJUSTED.....

TREND.....

Month	SEASONALLY ADJUSTED.....					TREND.....					Civilian population aged 15 and over '000
	Employed full time '000	Total employed '000	Total unemployed '000	Unemp- loyment rate %	Partic- ipation rate %	Employed full time '000	Total employed '000	Total unemployed '000	Unemp- loyment rate %	Partic- ipation rate %	
MALES											
1996											
December	1 430.0	1 607.4	139.1	8.0	72.6	1 427.6	1 602.8	141.4	8.1	72.5	2 407.3
1997											
January	1 435.1	1 616.8	139.0	7.9	72.9	1 428.2	1 603.5	141.8	8.1	72.4	2 409.2
February	1 413.5	1 587.4	151.1	8.7	72.1	1 427.8	1 604.3	142.6	8.2	72.5	2 411.1
March	1 437.8	1 607.1	141.5	8.1	72.5	1 426.0	1 604.2	143.2	8.2	72.4	2 413.0
April	1 424.3	1 608.7	142.3	8.1	72.5	1 423.0	1 602.9	143.3	8.2	72.3	2 415.6
May	1 414.0	1 599.1	145.7	8.4	72.2	1 419.6	1 600.3	143.3	8.2	72.1	2 418.1
June	1 422.5	1 602.1	132.3	7.6	71.6	1 417.1	1 597.3	143.5	8.2	71.9	2 420.7
July	1 414.8	1 598.2	154.9	8.8	72.3	1 416.7	1 595.2	144.2	8.3	71.8	2 423.6
August	1 406.2	1 577.9	141.7	8.2	70.9	1 419.0	1 595.5	144.5	8.3	71.7	2 426.5
September	1 428.1	1 603.8	143.2	8.2	71.9	1 423.4	1 598.7	143.9	8.3	71.7	2 429.3
October	1 430.7	1 598.9	145.0	8.3	71.7	1 428.5	1 604.1	142.1	8.1	71.8	2 432.3
November	1 437.7	1 614.8	143.6	8.2	72.2	1 432.2	1 609.4	139.9	8.0	71.8	2 435.2
December	1 435.0	1 618.6	132.8	7.6	71.8	1 434.5	1 613.2	137.7	7.9	71.8	2 438.1
1998											
January	1 438.5	1 627.1	129.8	7.4	72.0	1 435.6	1 615.5	135.8	7.8	71.8	2 440.3
February	1 425.9	1 597.8	141.0	8.1	71.2	1 435.7	1 616.7	135.2	7.7	71.7	2 442.4
FEMALES											
1996											
December	731.5	1 208.8	102.2	7.8	52.5	729.2	1 209.1	99.4	7.6	52.4	2 495.8
1997											
January	728.5	1 212.9	100.9	7.7	52.6	728.9	1 210.9	100.4	7.7	52.5	2 498.1
February	726.7	1 211.5	105.4	8.0	52.7	728.2	1 211.2	101.7	7.7	52.5	2 500.3
March	724.5	1 208.3	99.9	7.6	52.3	726.8	1 209.6	102.8	7.8	52.4	2 502.5
April	730.4	1 214.1	103.1	7.8	52.6	725.0	1 207.0	103.1	7.9	52.3	2 505.3
May	725.7	1 204.3	104.9	8.0	52.2	723.2	1 204.1	102.6	7.9	52.1	2 508.0
June	712.1	1 188.4	100.3	7.8	51.3	721.5	1 201.2	101.7	7.8	51.9	2 510.7
July	725.6	1 207.5	100.5	7.7	52.0	720.1	1 199.7	100.8	7.7	51.7	2 513.6
August	717.5	1 196.5	100.5	7.8	51.5	719.4	1 200.2	99.6	7.7	51.7	2 516.5
September	719.8	1 211.4	97.1	7.4	51.9	719.1	1 202.7	98.5	7.6	51.6	2 519.4
October	716.5	1 188.8	99.1	7.7	51.1	719.0	1 206.1	97.5	7.5	51.7	2 522.1
November	722.4	1 217.1	95.1	7.2	52.0	718.4	1 209.3	96.6	7.4	51.7	2 524.7
December	715.8	1 218.0	95.2	7.2	52.0	717.3	1 211.8	95.9	7.3	51.7	2 527.4
1998											
January	720.2	1 216.2	97.3	7.4	51.9	715.8	1 213.3	95.2	7.3	51.7	2 529.3
February	708.5	1 207.6	93.5	7.2	51.4	714.7	1 214.9	94.7	7.2	51.7	2 531.1
PERSONS											
1996											
December	2 161.5	2 816.3	241.4	7.9	62.4	2 156.8	2 811.9	240.8	7.9	62.3	4 903.1
1997											
January	2 163.6	2 829.7	239.8	7.8	62.6	2 157.0	2 814.5	242.2	7.9	62.3	4 907.3
February	2 140.3	2 798.9	256.4	8.4	62.2	2 156.0	2 815.5	244.3	8.0	62.3	4 911.4
March	2 162.2	2 815.4	241.3	7.9	62.2	2 152.9	2 813.8	246.0	8.0	62.2	4 915.5
April	2 154.7	2 822.9	245.5	8.0	62.4	2 148.0	2 809.9	246.4	8.1	62.1	4 920.8
May	2 139.6	2 803.3	250.6	8.2	62.0	2 142.8	2 804.4	245.9	8.1	61.9	4 926.1
June	2 134.6	2 790.4	232.6	7.7	61.3	2 138.6	2 798.5	245.3	8.1	61.7	4 931.4
July	2 140.4	2 805.7	255.4	8.3	62.0	2 136.9	2 794.9	244.9	8.1	61.6	4 937.2
August	2 123.7	2 774.4	242.2	8.0	61.0	2 138.4	2 795.7	244.1	8.0	61.5	4 942.9
September	2 147.9	2 815.2	240.2	7.9	61.7	2 142.5	2 801.3	242.3	8.0	61.5	4 948.7
October	2 147.2	2 787.7	244.1	8.1	61.2	2 147.5	2 810.2	239.6	7.9	61.6	4 954.3
November	2 160.1	2 831.9	238.7	7.8	61.9	2 150.7	2 818.7	236.5	7.7	61.6	4 959.9
December	2 150.7	2 836.6	228.0	7.4	61.7	2 151.8	2 825.0	233.6	7.6	61.6	4 965.6
1998											
January	2 158.7	2 843.3	227.1	7.4	61.8	2 151.4	2 828.8	231.0	7.6	61.6	4 969.5
February	2 134.4	2 805.4	234.5	7.7	61.1	2 150.4	2 831.6	229.9	7.5	61.6	4 973.5

(a) Revised due to annual seasonal reanalysis.

LABOUR FORCE STATUS (AGED 15 AND OVER)–Victoria(a)

SEASONALLY ADJUSTED.....

TREND.....

Month	SEASONALLY ADJUSTED.....					TREND.....					Civilian population aged 15 and over '000
	Employed full time '000	Total employed '000	Total unemployed '000	Unemp- loyment rate %	Partic- ipation rate %	Employed full time '000	Total employed '000	Total unemployed '000	Unemp- loyment rate %	Partic- ipation rate %	
MALES											
1996											
December	1 044.4	1 182.7	120.6	9.3	73.7	1 047.1	1 187.6	120.5	9.2	74.0	1 768.8
1997											
January	1 053.2	1 192.7	116.6	8.9	74.0	1 047.2	1 187.2	120.2	9.2	73.9	1 770.2
February	1 046.4	1 182.2	119.9	9.2	73.5	1 046.6	1 186.6	120.0	9.2	73.8	1 771.5
March	1 042.7	1 186.0	122.2	9.3	73.8	1 044.9	1 185.7	120.1	9.2	73.7	1 772.9
April	1 042.9	1 186.8	120.9	9.2	73.7	1 042.4	1 184.4	120.6	9.2	73.5	1 774.8
May	1 041.6	1 182.8	117.2	9.0	73.2	1 039.8	1 183.3	120.8	9.3	73.4	1 776.7
June	1 035.4	1 182.7	123.5	9.5	73.4	1 037.7	1 182.8	120.4	9.2	73.3	1 778.6
July	1 039.7	1 185.2	118.6	9.1	73.2	1 036.5	1 183.3	118.9	9.1	73.1	1 780.6
August	1 034.0	1 177.7	117.8	9.1	72.7	1 036.8	1 185.1	116.7	9.0	73.0	1 782.5
September	1 034.8	1 188.2	118.9	9.1	73.3	1 038.7	1 187.9	114.4	8.8	73.0	1 784.5
October	1 043.5	1 195.6	105.0	8.1	72.8	1 042.2	1 191.3	112.3	8.6	73.0	1 786.5
November	1 048.5	1 194.4	109.0	8.4	72.9	1 046.6	1 194.5	110.7	8.5	73.0	1 788.4
December	1 049.6	1 200.6	110.5	8.4	73.2	1 051.1	1 197.2	109.5	8.4	73.0	1 790.4
1998											
January	1 056.5	1 193.3	114.0	8.7	72.9	1 055.2	1 199.3	108.8	8.3	73.0	1 792.2
February	1 061.3	1 203.5	105.5	8.1	73.0	1 059.0	1 201.3	108.2	8.3	73.0	1 794.0
FEMALES											
1996											
December	510.0	908.7	91.6	9.2	54.2	513.5	911.5	90.2	9.0	54.2	1 846.8
1997											
January	516.1	918.8	84.3	8.4	54.3	512.4	912.8	89.3	8.9	54.2	1 848.3
February	512.2	914.9	88.8	8.8	54.3	511.4	913.0	89.2	8.9	54.2	1 849.7
March	506.1	904.9	89.7	9.0	53.7	510.3	912.1	89.9	9.0	54.1	1 851.1
April	510.0	913.8	91.3	9.1	54.2	509.6	910.5	90.9	9.1	54.0	1 853.1
May	506.8	904.9	94.3	9.4	53.9	509.4	908.8	91.8	9.2	53.9	1 855.1
June	515.3	914.9	92.4	9.2	54.2	509.3	907.7	92.3	9.2	53.8	1 857.1
July	510.0	908.5	88.9	8.9	53.7	509.3	907.6	91.7	9.2	53.8	1 859.0
August	504.4	896.3	93.4	9.4	53.2	509.4	909.0	90.3	9.0	53.7	1 861.0
September	512.4	917.9	87.2	8.7	54.0	509.9	911.6	88.5	8.8	53.7	1 862.9
October	512.1	913.2	87.9	8.8	53.7	511.3	915.1	86.5	8.6	53.7	1 864.8
November	508.3	921.0	84.4	8.4	53.9	513.6	918.8	84.7	8.4	53.8	1 866.8
December	519.6	924.9	79.1	7.9	53.7	516.6	922.1	83.0	8.3	53.8	1 868.7
1998											
January	517.6	923.5	85.3	8.5	53.9	519.7	924.9	81.6	8.1	53.8	1 870.5
February	527.7	925.7	79.3	7.9	53.7	522.7	927.2	80.3	8.0	53.8	1 872.2
PERSONS											
1996											
December	1 554.4	2 091.4	212.2	9.2	63.7	1 560.6	2 099.1	210.7	9.1	63.9	3 615.7
1997											
January	1 569.3	2 111.5	200.9	8.7	63.9	1 559.7	2 100.0	209.5	9.1	63.8	3 618.4
February	1 558.6	2 097.2	208.7	9.1	63.7	1 557.9	2 099.6	209.3	9.1	63.8	3 621.2
March	1 548.8	2 090.9	211.9	9.2	63.5	1 555.2	2 097.8	210.0	9.1	63.7	3 624.0
April	1 552.9	2 100.7	212.3	9.2	63.8	1 552.0	2 094.9	211.4	9.2	63.6	3 627.9
May	1 548.4	2 087.7	211.6	9.2	63.3	1 549.2	2 092.1	212.7	9.2	63.5	3 631.8
June	1 550.7	2 097.6	215.9	9.3	63.6	1 547.0	2 090.4	212.7	9.2	63.3	3 635.7
July	1 549.7	2 093.7	207.5	9.0	63.2	1 545.8	2 090.9	210.6	9.1	63.2	3 639.6
August	1 538.4	2 074.1	211.2	9.2	62.7	1 546.2	2 094.2	207.0	9.0	63.2	3 643.5
September	1 547.1	2 106.2	206.2	8.9	63.4	1 548.6	2 099.5	202.9	8.8	63.1	3 647.4
October	1 555.5	2 108.7	192.8	8.4	63.0	1 553.5	2 106.4	198.9	8.6	63.1	3 651.3
November	1 556.8	2 115.4	193.4	8.4	63.2	1 560.3	2 113.3	195.4	8.5	63.2	3 655.2
December	1 569.2	2 125.5	189.6	8.2	63.3	1 567.7	2 119.3	192.6	8.3	63.2	3 659.2
1998											
January	1 574.1	2 116.8	199.3	8.6	63.2	1 574.9	2 124.2	190.4	8.2	63.2	3 662.7
February	1 589.0	2 129.2	184.8	8.0	63.1	1 581.7	2 128.5	188.5	8.1	63.2	3 666.2

(a) Revised due to annual seasonal reanalysis.

LABOUR FORCE STATUS (AGED 15 AND OVER)–Queensland(a)

SEASONALLY ADJUSTED.....

TREND.....

Month	SEASONALLY ADJUSTED.....					TREND.....					Civilian population aged 15 and over '000
	Employed full time '000	Total employed '000	Total unemployed '000	Unemployment rate %	Participation rate %	Employed full time '000	Total employed '000	Total unemployed '000	Unemployment rate %	Participation rate %	
MALES											
1996											
December	782.4	881.5	93.4	9.6	74.4	778.5	880.2	94.5	9.7	74.4	1 310.2
1997											
January	773.6	879.7	98.2	10.0	74.5	775.3	878.3	96.1	9.9	74.2	1 312.6
February	774.5	874.9	97.1	10.0	73.9	772.0	876.5	97.4	10.0	74.1	1 315.0
March	764.5	871.0	102.8	10.6	73.9	769.9	875.7	98.0	10.1	73.9	1 317.4
April	767.2	875.2	97.2	10.0	73.7	769.6	876.3	97.6	10.0	73.8	1 319.7
May	771.9	879.3	96.7	9.9	73.8	771.1	878.5	96.4	9.9	73.8	1 321.9
June	769.7	883.9	89.4	9.2	73.5	773.7	881.8	95.1	9.7	73.8	1 324.1
July	787.6	887.9	95.7	9.7	74.2	776.2	885.2	94.5	9.6	73.9	1 326.2
August	775.7	887.3	96.3	9.8	74.1	778.1	888.3	94.3	9.6	74.0	1 328.2
September	776.4	886.6	94.6	9.6	73.8	779.7	891.4	94.4	9.6	74.1	1 330.3
October	782.9	900.4	92.8	9.3	74.5	781.3	894.7	94.3	9.5	74.2	1 332.8
November	780.9	895.4	95.2	9.6	74.2	783.5	898.5	93.8	9.5	74.3	1 335.4
December	783.2	899.8	94.6	9.5	74.3	786.3	902.3	93.2	9.4	74.4	1 338.0
1998											
January	795.7	910.8	89.2	8.9	74.6	789.1	905.9	92.5	9.3	74.5	1 340.1
February	792.4	909.1	93.2	9.3	74.7	792.3	909.0	92.0	9.2	74.6	1 342.3
FEMALES											
1996											
December	381.3	664.9	69.6	9.5	55.1	378.7	663.1	69.7	9.5	54.9	1 334.1
1997											
January	372.8	661.6	76.0	10.3	55.2	377.7	665.1	70.0	9.5	55.0	1 336.7
February	378.4	673.5	68.4	9.2	55.4	376.6	667.5	69.6	9.4	55.0	1 339.3
March	377.4	669.4	66.0	9.0	54.8	375.7	670.0	68.7	9.3	55.1	1 341.9
April	377.2	671.9	66.5	9.0	54.9	375.2	672.2	67.7	9.1	55.0	1 344.1
May	375.5	670.6	70.4	9.5	55.0	375.0	674.3	67.0	9.0	55.1	1 346.4
June	366.2	678.6	65.2	8.8	55.1	375.3	676.7	66.9	9.0	55.1	1 348.6
July	380.6	681.7	64.5	8.6	55.2	376.5	679.5	67.3	9.0	55.3	1 350.8
August	383.1	679.5	69.7	9.3	55.4	378.6	682.3	67.7	9.0	55.4	1 352.9
September	379.0	683.8	68.4	9.1	55.5	381.4	684.9	67.7	9.0	55.5	1 355.1
October	381.0	691.7	68.4	9.0	56.0	384.3	687.2	67.5	8.9	55.6	1 357.6
November	386.2	690.3	67.5	8.9	55.7	386.8	689.4	66.9	8.8	55.6	1 360.1
December	397.7	688.0	64.4	8.6	55.2	388.8	691.6	66.2	8.7	55.6	1 362.7
1998											
January	384.9	690.5	64.9	8.6	55.4	390.4	693.9	65.4	8.6	55.6	1 364.7
February	392.4	702.0	65.2	8.5	56.1	391.8	696.1	64.6	8.5	55.7	1 366.7
PERSONS											
1996											
December	1 163.7	1 546.4	163.0	9.5	64.6	1 157.2	1 543.2	164.3	9.6	64.6	2 644.3
1997											
January	1 146.4	1 541.3	174.2	10.2	64.8	1 153.0	1 543.4	166.1	9.7	64.5	2 649.3
February	1 152.9	1 548.4	165.4	9.7	64.6	1 148.6	1 544.0	167.0	9.8	64.5	2 654.3
March	1 141.9	1 540.3	168.8	9.9	64.3	1 145.6	1 545.7	166.7	9.7	64.4	2 659.3
April	1 144.4	1 547.2	163.8	9.6	64.2	1 144.8	1 548.6	165.3	9.6	64.3	2 663.8
May	1 147.4	1 549.9	167.1	9.7	64.4	1 146.1	1 552.8	163.4	9.5	64.3	2 668.3
June	1 135.9	1 562.4	154.6	9.0	64.2	1 149.0	1 558.5	162.0	9.4	64.4	2 672.8
July	1 168.2	1 569.6	160.2	9.3	64.6	1 152.7	1 564.7	161.7	9.4	64.5	2 676.9
August	1 158.8	1 566.8	166.0	9.6	64.6	1 156.7	1 570.6	162.0	9.4	64.6	2 681.1
September	1 155.3	1 570.4	163.0	9.4	64.6	1 161.1	1 576.3	162.1	9.3	64.7	2 685.3
October	1 163.9	1 592.1	161.2	9.2	65.2	1 165.6	1 581.9	161.7	9.3	64.8	2 690.4
November	1 167.1	1 585.6	162.8	9.3	64.9	1 170.3	1 587.8	160.7	9.2	64.9	2 695.5
December	1 180.9	1 587.8	159.0	9.1	64.7	1 175.1	1 593.9	159.3	9.1	64.9	2 700.6
1998											
January	1 180.6	1 601.3	154.2	8.8	64.9	1 179.5	1 599.8	157.9	9.0	65.0	2 704.8
February	1 184.8	1 611.1	158.3	8.9	65.3	1 184.1	1 605.1	156.6	8.9	65.0	2 709.0

(a) Revised due to annual seasonal reanalysis.

LABOUR FORCE STATUS (AGED 15 AND OVER)--South Australia(a)

SEASONALLY ADJUSTED.....

TREND.....

Month	SEASONALLY ADJUSTED.....					TREND.....					Civilian population aged 15 and over '000
	Employed full time '000	Total employed '000	Total unemployed '000	Unemp- loyment rate %	Partic- ipation rate %	Employed full time '000	Total employed '000	Total unemployed '000	Unemp- loyment rate %	Partic- ipation rate %	
MALES											
1996											
December	321.4	369.0	41.4	10.1	70.8	320.7	368.2	41.7	10.2	70.7	579.8
1997											
January	322.2	368.5	41.1	10.0	70.6	321.1	368.9	41.8	10.2	70.8	580.0
February	320.9	369.3	42.0	10.2	70.9	321.2	369.5	42.1	10.2	70.9	580.3
March	320.8	371.9	41.9	10.1	71.3	321.2	370.2	42.6	10.3	71.1	580.5
April	322.1	369.2	44.0	10.7	71.1	321.6	370.9	43.0	10.4	71.3	580.8
May	319.0	370.8	44.5	10.7	71.5	322.3	371.9	43.3	10.4	71.4	581.1
June	324.8	374.4	42.6	10.2	71.7	323.3	373.0	43.4	10.4	71.6	581.5
July	325.0	373.2	43.3	10.4	71.6	324.1	373.9	43.4	10.4	71.7	581.9
August	325.6	375.3	42.6	10.2	71.8	324.6	374.5	43.4	10.4	71.8	582.3
September	324.8	375.4	43.8	10.4	71.9	324.8	374.5	43.3	10.4	71.7	582.7
October	323.3	374.0	43.6	10.4	71.6	324.5	373.9	43.3	10.4	71.6	583.1
November	323.6	372.8	43.8	10.5	71.4	323.9	373.0	43.3	10.4	71.3	583.6
December	323.5	371.9	43.0	10.4	71.1	323.3	372.0	43.3	10.4	71.1	584.0
1998											
January	325.9	370.8	42.3	10.2	70.7	322.7	371.0	43.2	10.4	70.9	584.3
February	318.6	369.4	43.6	10.6	70.6	322.1	370.1	43.1	10.4	70.7	584.5
FEMALES											
1996											
December	149.6	290.2	28.6	9.0	53.1	150.1	291.5	27.4	8.6	53.1	600.5
1997											
January	150.8	293.2	26.4	8.3	53.2	150.0	292.1	27.2	8.5	53.2	600.7
February	150.4	293.4	27.2	8.5	53.4	150.2	292.5	27.2	8.5	53.2	601.0
March	150.1	294.2	28.0	8.7	53.6	150.5	292.3	27.2	8.5	53.2	601.2
April	150.5	291.7	27.0	8.5	53.0	150.7	291.5	27.4	8.6	53.0	601.5
May	149.1	288.4	26.6	8.5	52.3	150.3	290.3	27.5	8.7	52.8	601.8
June	152.8	289.4	28.2	8.9	52.7	149.4	289.1	27.6	8.7	52.6	602.2
July	148.9	287.8	28.5	9.0	52.5	148.3	288.4	27.7	8.8	52.5	602.6
August	145.4	287.1	27.4	8.7	52.2	147.1	288.3	27.8	8.8	52.4	602.9
September	144.8	288.1	28.0	8.9	52.4	146.3	288.2	27.8	8.8	52.4	603.3
October	145.2	289.5	27.3	8.6	52.5	146.0	287.9	27.9	8.8	52.3	603.7
November	146.5	288.8	28.2	8.9	52.5	146.2	287.0	28.1	8.9	52.1	604.1
December	148.2	285.3	27.6	8.8	51.8	146.5	285.7	28.3	9.0	51.9	604.5
1998											
January	147.1	283.2	30.1	9.6	51.8	146.9	284.4	28.5	9.1	51.7	604.8
February	146.2	281.3	28.1	9.1	51.1	147.2	283.0	28.8	9.2	51.5	605.1
PERSONS											
1996											
December	470.9	659.2	70.0	9.6	61.8	470.9	659.8	69.1	9.5	61.8	1 180.3
1997											
January	473.0	661.7	67.5	9.3	61.8	471.2	661.0	69.0	9.5	61.8	1 180.8
February	471.3	662.7	69.3	9.5	62.0	471.4	662.0	69.3	9.5	61.9	1 181.2
March	470.9	666.1	69.9	9.5	62.3	471.7	662.5	69.9	9.5	62.0	1 181.7
April	472.7	660.8	71.0	9.7	61.9	472.2	662.4	70.4	9.6	62.0	1 182.3
May	468.2	659.2	71.1	9.7	61.7	472.6	662.2	70.8	9.7	62.0	1 183.0
June	477.6	663.8	70.8	9.6	62.1	472.7	662.0	71.1	9.7	61.9	1 183.6
July	473.9	661.1	71.8	9.8	61.9	472.3	662.3	71.2	9.7	61.9	1 184.4
August	471.0	662.4	70.0	9.6	61.8	471.7	662.8	71.1	9.7	61.9	1 185.2
September	469.5	663.5	71.8	9.8	62.0	471.1	662.8	71.2	9.7	61.9	1 186.0
October	468.5	663.5	70.9	9.6	61.9	470.5	661.8	71.3	9.7	61.8	1 186.9
November	470.2	661.6	72.0	9.8	61.8	470.1	659.9	71.4	9.8	61.6	1 187.7
December	471.7	657.3	70.6	9.7	61.2	469.9	657.7	71.5	9.8	61.4	1 188.5
1998											
January	473.0	654.0	72.4	10.0	61.1	469.6	655.4	71.7	9.9	61.1	1 189.1
February	464.9	650.7	71.7	9.9	60.7	469.3	653.1	71.9	9.9	60.9	1 189.6

(a) Revised due to annual seasonal reanalysis.

LABOUR FORCE STATUS (AGED 15 AND OVER)–Western Australia(a)

SEASONALLY ADJUSTED.....

TREND.....

Month	SEASONALLY ADJUSTED.....					TREND.....					Civilian population aged 15 and over '000
	Employed full time '000	Total employed '000	Total unemployed '000	Unemp- loyment rate %	Partic- ipation rate %	Employed full time '000	Total employed '000	Total unemployed '000	Unemp- loyment rate %	Partic- ipation rate %	
MALES											
1996											
December	428.4	484.1	40.7	7.8	76.1	431.1	485.5	40.0	7.6	76.2	689.9
1997											
January	434.2	491.8	37.2	7.0	76.6	432.3	487.5	38.9	7.4	76.2	691.0
February	435.1	490.3	38.0	7.2	76.3	433.5	489.3	37.9	7.2	76.2	692.1
March	433.4	490.0	37.4	7.1	76.1	434.4	490.7	37.3	7.1	76.2	693.2
April	434.8	490.4	36.7	7.0	75.9	435.4	491.6	37.4	7.1	76.2	694.5
May	436.2	492.1	37.6	7.1	76.1	436.4	492.4	37.8	7.1	76.2	695.9
June	437.5	495.3	38.2	7.2	76.5	437.5	493.2	38.2	7.2	76.2	697.1
July	438.4	491.7	39.4	7.4	76.0	438.6	494.4	38.4	7.2	76.3	698.4
August	440.5	497.4	38.9	7.3	76.6	439.9	496.1	38.4	7.2	76.4	699.8
September	442.2	497.1	39.9	7.4	76.6	441.2	497.7	38.1	7.1	76.4	701.1
October	439.9	498.7	33.6	6.3	75.8	442.4	499.3	37.8	7.0	76.5	702.4
November	443.7	501.7	38.2	7.1	76.7	443.3	500.6	37.4	7.0	76.5	703.8
December	445.5	502.7	38.7	7.1	76.8	444.0	501.6	37.2	6.9	76.4	705.1
1998											
January	447.0	503.0	37.2	6.9	76.5	444.4	502.3	37.0	6.9	76.4	706.1
February	441.0	500.2	36.3	6.8	75.9	444.5	502.4	36.9	6.8	76.3	707.1
FEMALES											
1996											
December	201.7	366.7	29.6	7.5	56.9	195.5	364.3	30.1	7.6	56.6	696.9
1997											
January	193.4	363.7	32.3	8.1	56.7	193.8	363.5	30.9	7.8	56.5	698.0
February	190.3	364.1	31.8	8.0	56.6	192.2	362.2	31.1	7.9	56.3	699.1
March	189.2	360.3	31.1	7.9	55.9	190.8	360.5	30.7	7.9	55.9	700.3
April	190.8	358.0	31.3	8.0	55.5	190.2	359.1	29.9	7.7	55.4	701.6
May	192.0	356.9	26.2	6.8	54.5	190.7	358.8	28.8	7.4	55.1	702.9
June	188.0	358.2	27.7	7.2	54.8	192.2	360.2	27.8	7.2	55.1	704.2
July	196.7	362.7	26.9	6.9	55.2	194.0	362.5	27.0	6.9	55.2	705.5
August	195.7	363.2	28.6	7.3	55.4	195.7	364.8	26.7	6.8	55.4	706.8
September	199.4	374.3	25.4	6.3	56.4	197.0	366.5	26.7	6.8	55.5	708.0
October	196.6	367.1	26.6	6.7	55.5	197.9	367.3	27.1	6.9	55.6	709.3
November	197.7	365.7	26.7	6.8	55.2	198.3	367.6	27.5	7.0	55.6	710.6
December	197.6	364.5	29.1	7.4	55.3	198.4	367.7	28.0	7.1	55.6	711.8
1998											
January	201.8	367.5	29.2	7.4	55.7	198.3	368.1	28.6	7.2	55.6	712.8
February	195.4	372.1	28.9	7.2	56.2	198.3	368.5	29.0	7.3	55.7	713.7
PERSONS											
1996											
December	630.0	850.8	70.3	7.6	66.4	626.5	849.9	70.1	7.6	66.3	1 386.7
1997											
January	627.6	855.4	69.5	7.5	66.6	626.2	851.0	69.7	7.6	66.3	1 389.0
February	625.4	854.4	69.8	7.5	66.4	625.6	851.5	69.0	7.5	66.2	1 391.2
March	622.6	850.4	68.5	7.5	65.9	625.2	851.1	68.1	7.4	66.0	1 393.5
April	625.7	848.4	68.0	7.4	65.6	625.6	850.7	67.3	7.3	65.8	1 396.1
May	628.2	849.0	63.8	7.0	65.3	627.1	851.2	66.6	7.3	65.6	1 398.8
June	625.5	853.5	65.9	7.2	65.6	629.7	853.3	66.0	7.2	65.6	1 401.4
July	635.1	854.4	66.3	7.2	65.6	632.6	856.9	65.5	7.1	65.7	1 403.9
August	636.3	860.6	67.5	7.3	66.0	635.7	860.9	65.0	7.0	65.8	1 406.5
September	641.6	871.4	65.3	7.0	66.5	638.3	864.3	64.8	7.0	65.9	1 409.1
October	636.5	865.8	60.2	6.5	65.6	640.2	866.6	64.8	7.0	66.0	1 411.7
November	641.4	867.4	64.9	7.0	65.9	641.6	868.2	64.9	7.0	66.0	1 414.3
December	643.1	867.2	67.8	7.2	66.0	642.4	869.3	65.2	7.0	66.0	1 416.9
1998											
January	648.8	870.5	66.4	7.1	66.0	642.7	870.3	65.6	7.0	66.0	1 418.9
February	636.4	872.3	65.2	7.0	66.0	642.7	870.9	65.9	7.0	65.9	1 420.8

(a) Revised due to annual seasonal reanalysis.

LABOUR FORCE STATUS (AGED 15 AND OVER)--Tasmania(a)

SEASONALLY ADJUSTED.....

TREND.....

Month	SEASONALLY ADJUSTED.....					TREND.....					Civilian population aged 15 and over '000
	Employed full time '000	Total employed '000	Total unemployed '000	Unemployment rate %	Participation rate %	Employed full time '000	Total employed '000	Total unemployed '000	Unemployment rate %	Participation rate %	
MALES											
1996											
December	99.6	113.1	14.3	11.2	70.1	99.5	113.7	13.9	10.9	70.3	181.6
1997											
January	98.5	113.2	13.9	10.9	70.0	99.0	113.2	14.0	11.0	70.0	181.6
February	99.1	112.4	14.2	11.2	69.7	98.6	112.7	14.1	11.1	69.8	181.6
March	98.5	113.1	14.1	11.1	70.0	98.2	112.3	14.2	11.2	69.6	181.6
April	97.4	111.5	14.9	11.8	69.6	97.7	111.9	14.2	11.3	69.4	181.6
May	97.8	112.2	13.5	10.7	69.2	97.3	111.7	14.2	11.3	69.3	181.7
June	96.8	110.9	13.8	11.1	68.6	97.2	111.7	14.2	11.3	69.2	181.7
July	96.3	110.9	15.2	12.1	69.4	97.2	111.8	14.2	11.3	69.3	181.7
August	97.4	112.5	14.5	11.4	69.8	97.4	111.9	14.5	11.5	69.5	181.8
September	97.8	112.7	13.5	10.7	69.4	97.6	112.0	14.8	11.7	69.7	181.8
October	99.3	112.4	15.6	12.2	70.4	97.5	111.9	15.2	11.9	69.9	181.8
November	96.6	111.9	15.6	12.3	70.2	97.2	111.8	15.4	12.1	70.0	181.8
December	96.2	109.9	16.9	13.3	69.7	96.8	111.7	15.6	12.3	70.0	181.8
1998											
January	96.6	112.2	15.2	11.9	70.1	96.4	111.6	15.6	12.3	70.0	181.7
February	95.4	112.0	14.7	11.6	69.8	95.9	111.5	15.7	12.3	70.0	181.6
FEMALES											
1996											
December	41.6	82.3	8.9	9.8	48.6	41.7	83.8	9.3	10.0	49.6	187.8
1997											
January	41.0	84.5	9.4	10.0	50.0	41.4	83.5	9.3	10.0	49.4	187.8
February	40.7	83.3	9.4	10.1	49.3	41.2	83.1	9.3	10.0	49.2	187.8
March	40.7	82.6	9.5	10.3	49.0	41.0	82.7	9.2	10.0	49.0	187.8
April	41.2	82.4	8.9	9.8	48.6	40.7	82.2	9.2	10.1	48.7	187.8
May	42.1	82.2	9.4	10.2	48.7	40.2	81.6	9.3	10.3	48.4	187.9
June	39.2	80.0	9.9	11.0	47.8	39.7	81.0	9.5	10.5	48.2	187.9
July	38.2	80.5	8.7	9.7	47.4	39.3	80.5	9.8	10.8	48.0	187.9
August	38.6	81.7	10.0	10.9	48.8	39.2	80.3	9.9	11.0	48.0	187.9
September	39.1	78.5	11.4	12.7	47.8	39.6	80.5	9.9	10.9	48.1	188.0
October	40.7	80.9	9.5	10.5	48.1	40.4	81.0	9.6	10.6	48.2	188.0
November	42.0	82.5	8.8	9.6	48.6	41.3	81.7	9.2	10.1	48.3	188.0
December	41.8	82.5	8.6	9.4	48.4	42.0	82.4	8.8	9.6	48.5	188.0
1998											
January	42.9	82.3	8.2	9.1	48.2	42.6	83.1	8.3	9.1	48.7	187.9
February	42.8	84.8	7.9	8.5	49.4	43.1	83.7	7.9	8.6	48.8	187.8
PERSONS											
1996											
December	141.1	195.4	23.2	10.6	59.2	141.2	197.4	23.3	10.5	59.8	369.4
1997											
January	139.5	197.7	23.3	10.5	59.8	140.5	196.6	23.3	10.6	59.5	369.4
February	139.8	195.7	23.6	10.8	59.4	139.8	195.8	23.4	10.7	59.3	369.4
March	139.2	195.7	23.6	10.7	59.4	139.2	195.0	23.4	10.7	59.1	369.4
April	138.6	193.9	23.8	10.9	58.9	138.4	194.1	23.4	10.8	58.9	369.5
May	139.9	194.4	22.8	10.5	58.8	137.5	193.3	23.5	10.9	58.7	369.5
June	136.0	190.9	23.7	11.0	58.1	136.9	192.6	23.7	11.0	58.5	369.6
July	134.6	191.3	23.9	11.1	58.2	136.5	192.2	24.0	11.1	58.5	369.7
August	136.0	194.2	24.5	11.2	59.1	136.6	192.2	24.4	11.3	58.6	369.7
September	136.9	191.2	24.9	11.5	58.4	137.1	192.5	24.7	11.4	58.7	369.8
October	140.1	193.3	25.1	11.5	59.1	137.9	192.9	24.8	11.4	58.9	369.8
November	138.6	194.4	24.4	11.2	59.2	138.5	193.5	24.7	11.3	59.0	369.8
December	138.0	192.3	25.5	11.7	58.9	138.8	194.0	24.4	11.2	59.1	369.8
1998											
January	139.6	194.5	23.4	10.8	59.0	139.0	194.6	24.0	11.0	59.2	369.6
February	138.3	196.9	22.6	10.3	59.4	139.0	195.2	23.6	10.8	59.2	369.4

(a) Revised due to annual seasonal reanalysis.

LABOUR FORCE STATUS (AGED 15 AND OVER)–Northern Territory(a)(b)

TREND.....

Month	Employed full time '000	Total employed '000	Total unemployed '000	Unemployment rate %	Participation rate %	Civilian population aged 15 and over '000
MALES						
1996						
December	39.5	45.5	2.5	5.3	74.5	64.4
1997						
January	39.6	45.4	2.7	5.6	74.5	64.5
February	39.8	45.6	2.8	5.9	74.9	64.7
March	40.0	46.0	2.9	6.0	75.5	64.8
April	40.0	46.3	3.0	6.1	76.1	64.8
May	39.8	46.5	3.0	6.0	76.2	64.9
June	39.5	46.4	3.0	6.0	76.0	64.9
July	39.5	46.2	2.9	5.9	75.6	65.0
August	39.9	46.3	2.7	5.5	75.4	65.0
September	40.7	46.6	2.5	5.0	75.5	65.0
October	41.7	47.1	2.3	4.6	75.7	65.2
November	42.6	47.7	2.2	4.3	76.1	65.4
December	43.3	48.1	2.1	4.3	76.6	65.6
1998						
January	43.7	48.5	2.2	4.3	76.9	65.9
February	44.0	48.7	2.3	4.4	77.0	66.1
FEMALES						
1996						
December	23.7	37.0	2.1	5.3	62.0	63.0
1997						
January	23.4	37.0	2.1	5.3	61.9	63.1
February	23.5	37.3	2.2	5.5	62.3	63.3
March	23.6	37.7	2.3	5.8	63.0	63.5
April	23.8	38.2	2.4	5.9	63.8	63.6
May	24.0	38.5	2.4	5.9	64.2	63.7
June	24.2	38.7	2.3	5.6	64.2	63.8
July	24.8	38.8	2.1	5.0	63.9	63.9
August	25.5	38.9	1.8	4.5	63.6	64.0
September	26.3	39.0	1.7	4.1	63.5	64.1
October	27.1	39.2	1.7	4.1	63.6	64.2
November	27.4	39.4	1.7	4.3	63.9	64.4
December	27.5	39.4	1.8	4.5	64.0	64.5
1998						
January	27.3	39.3	1.9	4.7	63.9	64.6
February	27.0	39.2	2.0	4.9	63.8	64.7
PERSONS						
1996						
December	63.2	82.5	4.6	5.3	68.3	127.4
1997						
January	63.0	82.4	4.8	5.5	68.3	127.7
February	63.2	82.8	5.0	5.7	68.7	128.0
March	63.6	83.7	5.2	5.9	69.3	128.2
April	63.8	84.5	5.4	6.0	70.0	128.4
May	63.7	85.0	5.4	6.0	70.3	128.6
June	63.8	85.1	5.2	5.8	70.2	128.7
July	64.3	85.0	4.9	5.5	69.8	128.9
August	65.4	85.2	4.5	5.1	69.6	129.0
September	67.0	85.6	4.2	4.6	69.6	129.1
October	68.7	86.3	3.9	4.4	69.7	129.4
November	70.0	87.0	3.9	4.3	70.0	129.8
December	70.8	87.6	4.0	4.4	70.3	130.1
1998						
January	71.0	87.8	4.1	4.5	70.4	130.5
February	71.0	87.9	4.3	4.7	70.4	130.9

(a) Estimates for the most recent three months may be subject to significant revisions as data for later months become available.

(b) Revised due to annual seasonal reanalysis.

LABOUR FORCE STATUS (AGED 15 AND OVER)—Australian Capital Territory(a)(b)

TREND.....

Month	Employed full time '000	Total employed '000	Total unemployed '000	Unemp- loyment rate %	Partic- ipation rate %	Civilian population aged 15 and over '000
MALES						
1996						
December	71.6	82.2	7.8	8.6	78.3	114.9
1997						
January	71.5	82.2	7.7	8.6	78.2	115.0
February	71.5	82.4	7.6	8.4	78.2	115.1
March	71.7	82.9	7.3	8.1	78.3	115.3
April	72.0	83.5	7.1	7.8	78.5	115.3
May	72.4	84.1	6.9	7.6	78.9	115.3
June	72.9	84.6	6.9	7.5	79.3	115.3
July	73.2	84.8	7.0	7.7	79.6	115.4
August	73.3	84.9	7.3	7.9	79.8	115.4
September	73.2	84.7	7.5	8.1	79.8	115.5
October	72.9	84.4	7.6	8.3	79.6	115.6
November	72.6	84.1	7.6	8.3	79.3	115.7
December	72.4	83.9	7.5	8.2	78.9	115.8
1998						
January	72.3	83.8	7.5	8.2	78.7	116.0
February	72.3	83.7	7.3	8.1	78.4	116.1
FEMALES						
1996						
December	43.4	70.8	5.8	7.6	64.2	119.2
1997						
January	44.2	71.7	5.4	7.0	64.7	119.3
February	45.3	72.9	5.1	6.6	65.4	119.4
March	46.3	73.9	5.0	6.4	66.1	119.4
April	46.9	74.4	5.1	6.5	66.6	119.4
May	47.1	74.4	5.5	6.8	66.9	119.4
June	47.0	73.9	5.8	7.3	66.7	119.4
July	46.9	73.2	6.1	7.7	66.4	119.4
August	46.9	72.4	6.3	8.0	65.9	119.4
September	46.9	71.8	6.3	8.1	65.4	119.3
October	46.8	71.4	6.2	8.0	65.0	119.5
November	46.6	71.3	6.1	7.9	64.7	119.6
December	46.3	71.4	5.9	7.6	64.5	119.7
1998						
January	46.0	71.6	5.6	7.3	64.4	119.8
February	45.7	72.0	5.4	6.9	64.5	119.9
PERSONS						
1996						
December	115.0	153.0	13.6	8.2	71.2	234.1
1997						
January	115.7	153.9	13.2	7.9	71.3	234.3
February	116.8	155.3	12.7	7.6	71.7	234.5
March	117.9	156.8	12.4	7.3	72.1	234.7
April	118.9	157.9	12.2	7.2	72.5	234.7
May	119.5	158.4	12.3	7.2	72.7	234.7
June	119.9	158.4	12.7	7.4	72.9	234.8
July	120.1	158.0	13.1	7.7	72.9	234.8
August	120.2	157.3	13.6	7.9	72.8	234.8
September	120.1	156.4	13.8	8.1	72.5	234.8
October	119.7	155.8	13.8	8.1	72.1	235.1
November	119.2	155.4	13.7	8.1	71.8	235.3
December	118.7	155.3	13.4	7.9	71.6	235.6
1998						
January	118.3	155.4	13.1	7.8	71.4	235.8
February	118.0	155.7	12.7	7.5	71.3	236.1

(a) Estimates for the most recent three months may be subject to significant revisions as data for later months become available.

(b) Revised due to annual seasonal reanalysis.

EXPLANATORY NOTES

INTRODUCTION

1 This publication contains preliminary estimates of the civilian labour force derived from the Labour Force Survey component of the monthly population survey. Estimates for the current month are preliminary and subject to revision. Revised estimates for the current month and more detailed estimates will be published in *Labour Force, Australia* (6203.0).

MONTHLY POPULATION SURVEY

2 The population survey is based on a multi-stage area sample of private dwellings (currently about 30,000 houses, flats, etc.) and a list sample of non-private dwellings (hotels, motels, etc.), and covers about 0.5% of the population of Australia. The information is obtained from the occupants of selected dwellings by specially trained interviewers. The interviews are generally conducted during the two weeks beginning on the Monday between the 6th and 12th of each month. The information obtained relates to the week before the interview (i.e. the reference week).

TELEPHONE INTERVIEWING

3 The ABS has introduced the use of telephone interviewing into the Labour Force Survey. Households selected for the Labour Force Survey are interviewed each month for 8 months, with one eighth of the sample being replaced each month. The first interview is conducted face-to-face. Subsequent interviews are then conducted by telephone (if acceptable to the respondent). Telephone interviewing was phased in for each new sample group from August 1996 to February 1997.

4 During the period of implementation, the new method produced different estimates than would have been obtained under the old methodology. The effect peaked in November 1996, when it is estimated that the published estimate of total employment was about 36,000 to 48,000 lower than would have been measured under the old methodology. The effect dissipated over the final months of implementation and was no longer discernible from February 1997. Therefore, the estimates for February 1997 and onwards are directly comparable to estimates for periods prior to August 1996.

SCOPE OF SURVEY

5 The Labour Force Survey includes all persons aged 15 and over except members of the permanent defence forces, certain diplomatic personnel of overseas governments customarily excluded from census and estimated populations, overseas residents in Australia, and members of non-Australian defence forces (and their dependants) stationed in Australia.

COVERAGE

6 In the Labour Force Survey, coverage rules are applied which aim to ensure that each person is associated with only one dwelling, and hence has only one chance of selection. The coverage rules are necessarily a balance between theoretical and operational considerations. Nevertheless, the chance of a person being enumerated at two separate dwellings in the survey is considered to be negligible.

POPULATION BENCHMARKS

7 Labour Force Survey estimates are calculated in such a way as to add up to independent estimates of the civilian population aged 15 and over (population benchmarks). From February 1994, labour force estimates have been compiled using benchmarks based on the results of the 1991 Census of Population and Housing. Small revisions were made to many of the historical estimates from January 1989 to January 1994.

REVISION OF SERIES

8 From April 1986, the definition of employed persons was changed to include persons who worked without pay between 1 and 14 hours per week in a family business or on a farm (i.e. contributing family workers). For further information, see paragraphs 36 and 37 of the Explanatory Notes to the February 1987 issue of *Labour Force, Australia* (6203.0).

EXPLANATORY NOTES

SURVEY SAMPLE REDESIGN

9 The Labour Force Survey sample has been reselected using information collected in the 1996 Census of Population and Housing.

10 The bulk of the new sample will be phased in over the period September 1997 to April 1998, with one eighth of this portion of the sample being introduced every month. The remainder of the sample (about 15% of the total), which covers less settled areas of Australia and non-private dwellings was rotated in full for New South Wales, Victoria, Tasmania, Northern Territory and Australian Capital Territory in September 1997, and for Queensland, South Australia and Western Australia in October 1997. Such a pattern of implementation means that any changes to labour force estimates due to differences between the two samples, or any other influences, will be spread over the eight months.

11 For further details, see *Information Paper: Labour Force Survey Sample Design* (6269.0).

RELIABILITY OF ESTIMATES

12 Two types of error are possible in an estimate based on a sample survey: sampling error and non-sampling error.

Sampling error occurs because a sample, rather than the entire population, is surveyed. One measure of the likely difference resulting from not including all dwellings in the survey is given by the standard error. There are about two chances in three that a sample estimate will differ by less than one standard error from the figure that would have been obtained if all dwellings had been included in the survey, and about nineteen chances in twenty that the difference will be less than two standard errors. Standard errors of estimates for the latest month and of estimates of movements since the previous month are shown on pages 30 and 31. Standard errors of other estimates and other movements may be determined by using information in the Technical Notes in *Labour Force, Australia* (6203.0).

Non sampling error arises from inaccuracies in collecting, recording and processing the data. Every effort is made to minimise reporting error by the careful design of questionnaires, intensive training and supervision of interviewers, and efficient data processing procedures.

SEASONAL ADJUSTMENT AND TREND ESTIMATION

13 Seasonally adjusted series are published in Tables 2, 5 and 12 to 17. Seasonal factors are reviewed annually to take account of each additional year's original data. The results of the latest review were used to compile the revised seasonally adjusted and trend estimates given in this publication. Information about the method of adjustment and revised seasonally adjusted and trend estimates will be published in the February 1998 issue of *Labour Force, Australia* (6203.0).

14 Seasonal adjustment is a means of removing the estimated effects of normal seasonal variation from the series so that the effects of other influences on the series can be more clearly recognised. Seasonal adjustment does not aim to remove the irregular or non-seasonal influences which may be present in any particular month. This means that month-to-month movements of the seasonally adjusted estimates may not be reliable indicators of trend behaviour. For example, irregular factors unrelated to the trend account for more than half the seasonally adjusted movement with the following frequency:

- Employment: 5 in 10 monthly movements
- Unemployment: 7 in 10 monthly movements
- Unemployment rate: 7 in 10 monthly movements
- Participation rate: 9 in 10 monthly movements.

EXPLANATORY NOTES

SEASONAL ADJUSTMENT AND TREND ESTIMATION *continued*

15 The smoothing of seasonally adjusted series reduces the impact of the irregular component of the seasonally adjusted series, and creates trend estimates. These trend estimates are derived by applying a 13-term Henderson-weighted moving average to all months except the last six. The last six monthly trend estimates are obtained by applying surrogates of the Henderson average to the seasonally adjusted series. Trend series are used to analyse the underlying behaviour of the series over time. These are published in tables 3, 6 and 12 to 19.

16 While this smoothing technique enables estimates to be produced for the latest month, it does result in revisions to the most recent months as additional observations become available. Generally, subsequent revisions become smaller, and after three months have a negligible impact on the series. There will also be revisions as a result of the annual review of seasonal factors.

17 Trend estimates are published for the Northern Territory in table 18 and for the Australian Capital Territory in table 19. Unadjusted series for the two Territories have shown, historically, a high degree of variability, which can lead to considerable revisions to the seasonally adjusted estimates after each annual seasonal factor re-analysis. Seasonally adjusted estimates are not currently published for the two Territories. The most recent six months trend estimates are subject to revision. For the three most recent months, the revision may be relatively large. Inferences about trends drawn from smoothed seasonally adjusted (trend) estimates for months earlier than the latest three months are unlikely to be affected by month to month revisions. They may be affected by revision resulting from the annual re-analysis of seasonal factors.

18 For further information, see *A Guide to Interpreting Time Series — Monitoring 'Trends': an Overview* (1348.0) or contact the Assistant Director, Time Series Analysis on (02) 6252 6345.

RELATED PUBLICATIONS

19 Users may also wish to refer to *Labour Force, Australia* (6203.0). This publication contains a detailed list of related publications which are available from ABS Bookshops.

20 Current publications produced by the ABS are listed in the *Catalogue of Publications and Products* (1101.0). The ABS also issues, on Tuesdays and Fridays, a *Release Advice* (1105.0) which lists publications to be released in the next few days. The Catalogue and Release Advice are available from any ABS office.

UNPUBLISHED STATISTICS

21 As well as the statistics included in this and related publications, the ABS may have other relevant unpublished data available. Inquiries should be made to Donna Maurer on 02 6252 6525 or to any ABS office.

EFFECTS OF ROUNDING

22 Estimates have been rounded and discrepancies may occur between sums of the component items and totals.

23 Estimates of movement shown in this publication are obtained by taking the difference of unrounded estimates. The movement estimate is then rounded to one decimal place. Therefore where a discrepancy occurs between the reported movement and the difference of the rounded estimates, the reported movement will be more accurate.

SYMBOLS AND OTHER USAGES

- * subject to sampling variability too high for most practical uses. See the Technical Notes in 6203.0 for more details.
- .. not applicable
- r revised
- pts percentage points

G L O S S A R Y

Actively looking for work	Includes writing, telephoning or applying in person to an employer for work; answering a newspaper advertisement for a job; checking factory or Commonwealth Employment Service noticeboards; being registered with the Commonwealth Employment Service; checking or registering with any other employment agency; advertising or tendering for work; and contacting friends or relatives.
Attending school	Persons aged 15 to 19 enrolled full time at secondary or high schools in the reference week.
Attending tertiary educational institution full time	Persons aged 15 to 24 enrolled full time at a TAFE college, university, or other educational institution in the reference week.
Employed	Persons aged 15 and over who, during the reference week: <ul style="list-style-type: none">■ worked for one hour or more for pay, profit, commission or payment in kind in a job or business, or on a farm (comprising employees, employers and own account workers); or■ worked for one hour or more without pay in a family business or on a farm (i.e. contributing family workers); or■ were employees who had a job but were not at work and were:<ul style="list-style-type: none">■ on paid leave, on leave without pay for less than four weeks up to the end of the reference week,■ stood down without pay because of bad weather or plant breakdown at their place of employment for less than four weeks up to the end of the reference week,■ on strike or locked out,■ on workers' compensation and expected to be returning to their job, or■ receiving wages or salary while undertaking full-time study; or■ were employers, own account workers or contributing family workers who had a job, business or farm, but were not at work.
Full-time workers	Employed persons who usually worked 35 hours or more a week (in all jobs) and those who, although usually working less than 35 hours a week, worked 35 hours or more during the reference week
Labour force	For any group, persons who were employed or unemployed, as defined.
Labour force status	A classification of the civilian population aged 15 and over into employed, unemployed or not in the labour force, as defined. The definitions conform closely to the international standard definitions adopted by the International Conferences of Labour Statisticians.
Not in the labour force	Persons who were not in the categories employed or unemployed as defined.
Participation rate	For any group, the labour force expressed as a percentage of the civilian population aged 15 and over in the same group.
Part-time workers	Employed persons who usually worked less than 35 hours a week and who did so during the reference week.
Seasonally adjusted series	A time series of estimates with the estimated effects of normal seasonal variation removed. See Explanatory Note 13 to 14 for more detail.
Trend series	A smoothed seasonally adjusted series of estimates. See Explanatory Notes 15 to 17 for more detail.

G L O S S A R Y

Unemployed	Persons aged 15 and over who were not employed during the reference week, and: <ul style="list-style-type: none">■ had actively looked for full-time or part-time work at any time in the four weeks up to the end of the reference week and:<ul style="list-style-type: none">■ were available for work in the reference week, or would have been available except for temporary illness (i.e. lasting for less than four weeks to the end of the reference week), or■ were waiting to start a new job within four weeks from the end of the reference week and would have started in the reference week if the job had been available then; or■ were waiting to be called back to a full-time or part-time job from which they had been stood down without pay for less than four weeks up to the end of the reference week (including the whole of the reference week) for reasons other than bad weather or plant breakdown.
Unemployed looking for first full-time job	Unemployed persons looking for full-time work (as defined above) who had never worked full time for two weeks or more
Unemployed looking for full-time work	Unemployed persons who actively looked for full-time work, or were to resume a full-time job from which they had been stood down.
Unemployed looking for part-time work	Unemployed persons who had actively looked for part-time work only, or were to resume a part-time job from which they had been stood down.
Unemployment rate	For any group, the number of unemployed persons expressed as a percentage of the labour force in the same group.
Unemployment to population ratio	For any group, the number of unemployed persons expressed as a percentage of the civilian population in the same group.

STANDARD ERRORS

The estimates in this publication are based on information gained from the occupants of a sample survey of dwellings. Because the entire population is not surveyed, the published estimates are subject to sampling error. The most common way of quantifying such sampling error is to calculate the standard error for the published estimate or statistic.

LEVEL ESTIMATES

To illustrate, let us say the published level estimate for employed persons aged 15 to 19 is 500,000. The calculated standard error in this case is 9,000. The standard error is then used to interpret the level estimate of 500,000. For instance, the standard error of 9,000 indicates that:

- There are approximately two chances in three that the real value falls within the range 491,000 to 509,000 (500,000 + or - 9,000)
- There are approximately nineteen chances in twenty that the real value falls within the range 482,000 to 518,000 (500,000 + or - 18,000).

The real value in this case is the result we would obtain if we could enumerate the total population.

The following tables show the standard errors for this month's level estimates.

	EMPLOYED.....			UNEMPLOYED.....			Labour force	Not in labour force	Unemployment rate	Participation rate
	Full time	Part time	Total	Looking for f/t work	Looking for p/t work	Total				
	'000	'000	'000	'000	'000	'000				
NSW	14.6	9.7	16.0	6.2	3.9	6.9	16.4	14.1	0.2	0.3
Vic.	12.2	8.3	13.4	5.3	3.3	5.9	13.8	11.5	0.3	0.4
Qld	9.5	6.5	10.5	4.3	2.5	4.7	10.9	8.7	0.3	0.4
SA	5.1	3.6	5.7	2.4	1.4	2.6	5.9	5.1	0.4	0.5
WA	6.4	4.4	7.1	2.6	1.5	2.8	7.3	5.7	0.3	0.5
Tas.	1.7	1.3	1.8	1.0	0.5	1.0	1.8	1.7	0.5	0.5
NT	2.0	1.0	2.2	0.5	0.4	0.6	2.3	1.6	0.7	1.8
ACT	1.6	1.1	1.8	0.7	0.4	0.7	1.9	1.3	0.4	0.8
Males	19.9	9.4	20.8	8.3	3.9	8.9	21.5	15.1	0.2	0.3
Females	15.5	13.9	18.9	6.7	4.9	7.9	19.5	18.5	0.2	0.3
Persons	22.8	15.6	25.1	10.0	6.0	11.0	25.9	21.6	0.1	0.2

	NUMBER OF UNEMPLOYED PERSONS.....					UNEMPLOYMENT RATE.....				
	Aged 15-19 looking for f/t work	Aged 20 and over looking for f/t work	Total looking for f/t work	Looking for p/t work	Total	Aged 15-19 looking for f/t work	Aged 20 and over looking for f/t work	Total looking for f/t work	Looking for p/t work	Total
	'000	'000	'000	'000	'000	pts	pts	pts	pts	pts
NSW	2.8	5.9	6.2	3.9	6.9	2.6	0.3	0.3	0.5	0.2
Vic.	2.4	5.0	5.3	3.3	5.9	3.3	0.3	0.3	0.6	0.3
Qld	1.8	4.1	4.3	2.5	4.7	2.7	0.3	0.3	0.5	0.3
SA	1.1	2.3	2.4	1.4	2.6	4.3	0.5	0.5	0.7	0.4
WA	1.3	2.4	2.6	1.5	2.8	3.1	0.4	0.4	0.6	0.3
Tas.	0.5	0.9	1.0	0.5	1.0	5.1	0.6	0.6	0.9	0.5
NT	0.2	0.5	0.5	0.4	0.6	6.7	0.7	0.8	2.3	0.7
ACT	0.3	0.6	0.7	0.4	0.7	5.9	0.5	0.5	1.1	0.4
Males	3.5	7.9	8.3	3.9	8.9	1.7	0.2	0.2	0.6	0.2
Females	3.2	6.2	6.7	4.9	7.9	2.5	0.3	0.3	0.3	0.2
Persons	4.5	9.4	10.0	6.0	11.0	1.4	0.1	0.1	0.3	0.1

STANDARD ERRORS *continued*

MOVEMENT ESTIMATES

The following example illustrates how to use the standard error to interpret a movement estimate. Let us say that one month the published level estimate for females employed part time in Australia is 1,387,000; the next month the published level estimate is 1,400,000. The calculated standard error for the movement estimate is 10,400. The standard error is then used to interpret the published movement estimate of 13,000. For instance, the standard error of 10,300 indicates that:

- There are approximately two chances in three that the real movement over the two month period falls within the range 2,600 to 23,400 (13,000 + or - 10,400)
- There are approximately nineteen chances in twenty that the real movement falls within the range -7,800 to 33,800 (13,000 + or - 20,800).

The following tables show the standard errors for this month's movement estimates.

	EMPLOYED.....			UNEMPLOYED.....			Labour force	Not in labour force	Unemployment rate	Participation rate
	Full time	Part time	Total	Looking for f/t work	Looking for p/t work	Total				
	'000	'000	'000	'000	'000	'000				
NSW	11.4	7.3	12.5	4.8	3.1	5.3	12.9	10.9	0.2	0.3
Vic.	8.8	5.9	9.8	3.8	2.5	4.2	10.1	8.4	0.2	0.3
Qld	6.5	4.6	7.3	3.2	2.0	3.4	7.5	6.1	0.2	0.3
SA	3.5	2.5	3.9	1.7	1.0	1.8	4.1	3.5	0.3	0.3
WA	4.6	3.2	5.1	2.0	1.2	2.1	5.2	4.1	0.2	0.4
Tas.	1.5	1.1	1.7	0.7	0.4	0.8	1.8	1.5	0.4	0.5
NT	1.3	0.7	1.4	0.4	0.3	0.4	1.4	1.0	0.5	1.1
ACT	1.2	0.8	1.4	0.5	0.4	0.6	1.4	1.0	0.3	0.6
Males	15.2	7.1	15.9	6.4	3.3	6.7	16.5	11.3	0.1	0.2
Females	11.6	10.4	14.3	5.2	3.9	6.0	14.8	14.2	0.2	0.2
Persons	17.6	11.7	19.6	7.5	4.7	8.3	20.3	16.7	0.1	0.1

	NUMBER OF UNEMPLOYED PERSONS.....					UNEMPLOYMENT RATE.....				
	Aged 15-19 looking for f/t work	Aged 20 and over looking for f/t work	Total looking for f/t work	Looking for p/t work	Total	Aged 15-19 looking for f/t work	Aged 20 and over looking for f/t work	Total looking for f/t work	Looking for p/t work	Total
	'000	'000	'000	'000	'000	pts	pts	pts	pts	pts
NSW	2.5	4.5	4.8	3.1	5.3	2.1	0.2	0.2	0.4	0.2
Vic.	2.0	3.6	3.8	2.5	4.2	2.7	0.2	0.2	0.4	0.2
Qld	1.7	3.0	3.2	2.0	3.4	2.3	0.2	0.2	0.4	0.2
SA	0.8	1.6	1.7	1.0	1.8	3.1	0.3	0.3	0.5	0.3
WA	1.1	1.8	2.0	1.2	2.1	2.6	0.3	0.3	0.5	0.2
Tas.	0.4	0.7	0.7	0.4	0.8	3.7	0.5	0.5	0.8	0.4
NT	0.2	0.4	0.4	0.3	0.4	4.9	0.5	0.5	1.6	0.5
ACT	0.3	0.5	0.5	0.4	0.6	6.4	0.4	0.4	0.9	0.3
Males	3.1	6.0	6.4	3.3	6.7	1.4	0.1	0.1	0.5	0.1
Females	2.9	4.8	5.2	3.9	6.0	2.1	0.2	0.2	0.2	0.2
Persons	3.9	7.1	7.5	4.7	8.3	1.1	0.1	0.1	0.2	0.1

WHAT IF...? REVISIONS TO TREND ESTIMATES

EFFECT OF NEW SEASONALLY ADJUSTED ESTIMATES ON TREND ESTIMATES

Each time new seasonally adjusted estimates become available, trend estimates are revised (see paragraphs 13 and 14 of Explanatory Notes).

TREND REVISIONS

The examples in the tables below show four illustrative scenarios and the consequent revisions to previous trend estimates of employment and unemployment rate.

1 The March seasonally adjusted estimate is the same as the February estimate.

2 The March seasonally adjusted estimate is higher than the February estimate by:

- +0.33% for employment
- +2.1% for the unemployment rate

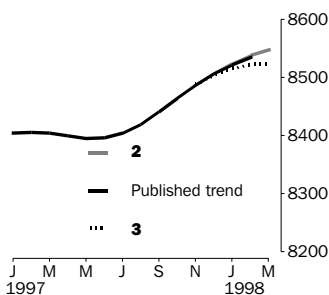
3 The March seasonally adjusted estimate is lower than the February estimate by:

- -0.33% for employment
- -2.1% for the unemployment rate

4 The March seasonally adjusted estimate results in a revised February trend estimate which is identical to the new March trend estimate.

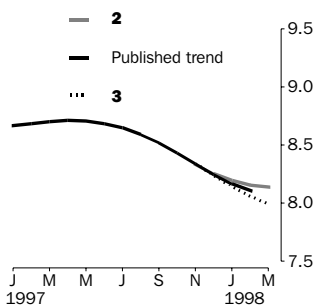
The percentage changes of 0.33% and 2.1% were chosen because they represent the average absolute monthly percentage changes in employment and the unemployment rate respectively.

EMPLOYMENT ('000)



		WHAT IF NEXT MONTH'S SEASONALLY ADJUSTED ESTIMATE IS:			
		1	2	3	4
		8 529.4 <i>i.e. the same as Feb 1998</i>	8 557.6 <i>i.e. rises by 0.33%</i>	8 501.2 <i>i.e. falls by 0.33%</i>	8 494.1 <i>i.e. same trend for Feb & Mar</i>
TREND as PUBLISHED					
1997	December	8 506.4	8 505.7	8 507.0	8 504.4
1998	January	8 522.0	8 519.6	8 523.8	8 515.4
	February	8 534.6	8 530.2	8 538.1	8 522.4
	March (new)	—	8 535.2	8 547.1	8 523.4

UNEMPLOYMENT RATE (%)



		WHAT IF NEXT MONTH'S SEASONALLY ADJUSTED ESTIMATE IS:			
		1	2	3	4
		8.1 <i>i.e. the same as Feb 1998</i>	8.3 <i>i.e. rises by 2.1%</i>	7.9 <i>i.e. falls by 2.1%</i>	8.4 <i>i.e. same trend for Feb & Mar</i>
TREND as PUBLISHED					
1997	December	8.2	8.3	8.3	8.2
1998	January	8.2	8.2	8.2	8.1
	February	8.1	8.1	8.2	8.1
	March (new)	—	8.1	8.1	8.0

The ABS publishes a wide range of information on Australia's economic and social conditions. A catalogue of publications and products is available from any of our offices (see below).

INFORMATION CONSULTANCY SERVICES

Information tailored to special needs of clients can be obtained from the Information Consultancy Service available at ABS Offices (see below).

ABS PRODUCTS

A large number of ABS products is available from the ABS Bookshops (see below). The ABS also provides a subscription service – you can telephone the ABS Subscription Service Australia wide toll free on 1300 3663 23.

ELECTRONIC SERVICES

A large range of data is available via on-line services, diskette, magnetic tape, tape cartridge and CD ROM. For more details about our electronic data services, contact any ABS office (see below) or e-mail us at:

- client.services@abs.gov.au

GENERAL SALES AND INQUIRIES

- Sydney 02 9268 4611
 - Melbourne 03 9615 7755
 - Brisbane 07 3222 6351
 - Perth 08 9360 5140
 - Adelaide 08 8237 7100
 - Hobart 03 6222 5800
 - Darwin 08 8943 2111
 - Canberra 02 6252 6627
- Information Services, ABS
PO Box 10, Belconnen ACT 2616



2620200002987

ISSN 1031-038X

RRP \$17.50